

2000 and 6000 Series Mulling Instructions

ViWinTech recommends using an Installation Masters™ Certified Installer or an experienced professional contractor who practices Installation Masters methods to provide the proper operation and weather tight seal to the building.

TOOLS & SUPPLIES NEEDED

- Safety Glasses
- Utility Knife
- Snips
- Tape Measure
- Pliers
- Mallet
- Caulking Gun
- Drill
- #2 Phillips Driver
- 100% Silicone Sealant

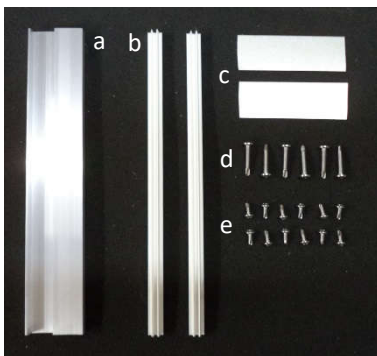


READ ALL INSTRUCTIONS BEFORE BEGINNING INSTALLATION.

THOROUGHLY REVIEW PARTS AND CHECK EACH WINDOW AND MULL KIT FOR POSSIBLE MISSING PARTS OR TRANSIT DAMAGE.

IMPORTANT: Consult your local building codes for additional installation requirements. The quality of the installation can affect the performance of this product. ViWinTech warrants this product when mulled according to these instructions and installed according to the installations adhered to each window. ViWinTech accepts no responsibility for air or water infiltration above, under or around the window.

MULLING MUST BE COMPLETED BEFORE UNIT CAN BE INSTALLED INTO OPENING



Mull Kit Parts:

- (a) Aluminum Mull
- (b) Vinyl Mull Cap x2
- (c) Metal Gusset x2
- (d) #10 x 1 1/4" pan head screw x6
- (e) #8 x 1/2" pan head screw x12



Step 1

Using a pair of pliers, remove and discard the jamb adjustment screws from side of units to be mulled.



Step 2

Using a utility knife, notch the accessory track back 3/8" on interior and exterior of units at both head and sill.



Step 3

Lay first unit interior side up on a smooth flat surface and apply a bead of 100% silicone sealant to edge of unit just above the pre-drilled holes.



Step 4

Center aluminum mull bar on window and push into sealant.



Step 5

Apply a bead of 100% silicone sealant to the exposed side of the aluminum mull bar.

2000 and 6000 Series Mulling Instructions



Step 6

Lay second window on work surface and push against aluminum mull bar, making sure head and sill line up.



Step 7

Trim legs on both ends of vinyl mull cap Back $\frac{3}{8}$ "



Step 8

Lay vinyl mull cap between windows making sure the ends line up with units and the two legs engage the accessory tracks on the windows.



Step 9

Using a mallet, pound the vinyl mull cap in, starting at one end and working your way to the other end. Repeat process on other side.



Step 10

Secure units together in the pre-drilled installation holes with screws (d), #10 x 1 $\frac{1}{4}$ " pan head.



Step 11

Fill ends of mulls with 100% silicone sealant, making sure all voids are completely filled.



Step 12

Install metal gussets across mull at head and sill with screws (e) #8 x $\frac{1}{2}$ " pan head.