

REVISIONS			
REV	DESCRIPTION	DATE	APPROVED
A	REVISED NOTES	3/09/12	R.L.
B	ADDED EDGE DISTANCES	01/21/16	R.L.

NOTES:

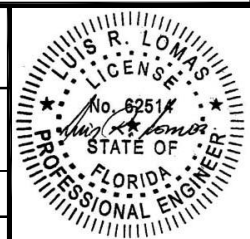
1. THE PRODUCT SHOWN HEREIN IS DESIGNED AND MANUFACTURED TO COMPLY WITH REQUIREMENTS OF THE FLORIDA BUILDING CODE INCLUDING THE HVHZ.
2. WOOD FRAMING AND MASONRY OPENING TO BE DESIGNED AND ANCHORED TO PROPERLY TRANSFER ALL LOADS TO STRUCTURE. FRAMING AND MASONRY OPENING IS THE RESPONSIBILITY OF THE ARCHITECT OR ENGINEER OF RECORD.
3. 1X BUCK OVER MASONRY/CONCRETE IS OPTIONAL.
4. WHERE SHIM OR BUCK THICKNESS IS LESS THAN 1-1/2" WINDOW UNITS MUST BE ANCHORED THROUGH THE FRAME IN ACCORDANCE WITH MANUFACTURER'S PUBLISHED INSTALLATION INSTRUCTIONS. ANCHORS SHALL BE SECURELY FASTENED DIRECTLY INTO MASONRY, CONCRETE OR OTHER STRUCTURAL SUBSTRATE MATERIAL.
5. WHERE WOOD BUCK THICKNESS IS 1-1/2" OR GREATER, BUCK SHALL BE SECURELY FASTENED TO MASONRY, CONCRETE OR OTHER STRUCTURAL SUBSTRATE. WINDOW UNITS MAY BE ANCHORED THROUGH FRAME TO SECURED WOOD BUCK IN ACCORDANCE WITH MANUFACTURER'S PUBLISHED INSTALLATION INSTRUCTIONS.
6. WHERE 1X BUCK IS NOT USED DISSIMILAR MATERIALS MUST BE SEPARATED WITH APPROVED COATING OR MEMBRANE. SELECTION OF COATING OR MEMBRANE IS THE RESPONSIBILITY OF THE ARCHITECT OR ENGINEER OF RECORD.
7. BUCKS SHALL EXTEND BEYOND WINDOW INTERIOR FACE SO THAT FULL FRAME SUPPORT IS PROVIDED.
8. FOR FIN INSTALLATION SHIM AS NEEDED. FOR FRAME INSTALLATION SHIM AS REQUIRED AT EACH ANCHOR LOCATION WITH LOAD BEARING SHIM. SHIM WHERE SPACE OF 1/16" OR GREATER OCCURS. MAXIMUM ALLOWABLE SHIM STACK TO BE 1/4".
9. SHIMS SHALL BE LOCATED, APPLIED AND MADE FROM MATERIALS AND THICKNESS CAPABLE OF SUSTAINING APPLICABLE LOADS.
10. WIND LOAD DURATION FACTOR Cd=1.6 WAS USED FOR WOOD ANCHOR CALCULATIONS.
11. FRAME MATERIAL: EXTRUDED RIGID PVC.
12. UNITS MUST BE GLAZED PER ASTM E1300-04.
13. APPROVED IMPACT PROTECTIVE SYSTEM IS REQUIRED FOR THIS PRODUCT IN WIND BORNE DEBRIS REGIONS.
14. FOR ANCHORING THROUGH FIN INTO WOOD FRAMING OR 2X BUCK USE #10 WOOD SCREWS WITH SUFFICIENT LENGTH TO ACHIEVE A 1 1/2" MINIMUM EMBEDMENT INTO SUBSTRATE. LOCATE ANCHORS AS SHOWN IN ELEVATIONS AND INSTALLATION DETAILS.

15. FOR ANCHORING THROUGH FRAME INTO WOOD FRAMING OR 2X BUCK USE #10 WOOD SCREWS WITH SUFFICIENT LENGTH TO ACHIEVE A 1 3/8" MINIMUM EMBEDMENT INTO SUBSTRATE. LOCATE ANCHORS AS SHOWN IN ELEVATIONS AND INSTALLATION DETAILS.
16. FOR ANCHORING THROUGH FRAME INTO MASONRY/CONCRETE USE 3/16" TAPCONS WITH SUFFICIENT LENGTH TO ACHIEVE A 1 1/4" MINIMUM EMBEDMENT INTO SUBSTRATE WITH 2 1/2" MINIMUM EDGE DISTANCE. LOCATE ANCHORS AS SHOWN IN ELEVATIONS AND INSTALLATION DETAILS.
17. FOR ANCHORING THROUGH FRAME INTO METAL STRUCTURE USE #10 SMS OR SELF DRILLING SCREWS WITH SUFFICIENT LENGTH TO ACHIEVE 3 THREADS MINIMUM BEYOND STRUCTURE INTERIOR WALL. LOCATE ANCHORS AS SHOWN IN ELEVATIONS AND INSTALLATION DETAILS.
18. ALL FASTENERS TO BE CORROSION RESISTANT.
19. INSTALLATION ANCHORS SHALL BE INSTALLED IN ACCORDANCE WITH ANCHOR MANUFACTURER'S INSTALLATION INSTRUCTIONS AND ANCHORS SHALL NOT BE USED IN SUBSTRATES WITH STRENGTHS LESS THAN THE MINIMUM STRENGTH SPECIFIED BELOW:
 - A. WOOD: MINIMUM SPECIFIC GRAVITY OF G=0.42
 - B. CONCRETE: MINIMUM COMPRESSIVE STRENGTH OF 2,000 PSI.
 - C. MASONRY: HOLLOW/FILLED BLOCK PER ASTM C90 WITH f'm=2,000PSI MINIMUM.
 - D. METAL STRUCTURE: STEEL 18GA (.048") FY=33KSI/FU=52KSI OR ALUMINUM 6063-T5 FU=30KSI 1/8" THICK MINIMUM
20. GEOMETRIC SHAPES ARE ALSO APPROVED. APPROVED GEOMETRIC SHAPES DIMENSIONS SHALL NOT EXCEED INSCRIBED DIMENSIONS OF APPROVED RECTANGULAR ASSEMBLY SHOWN IN SHEET 2.

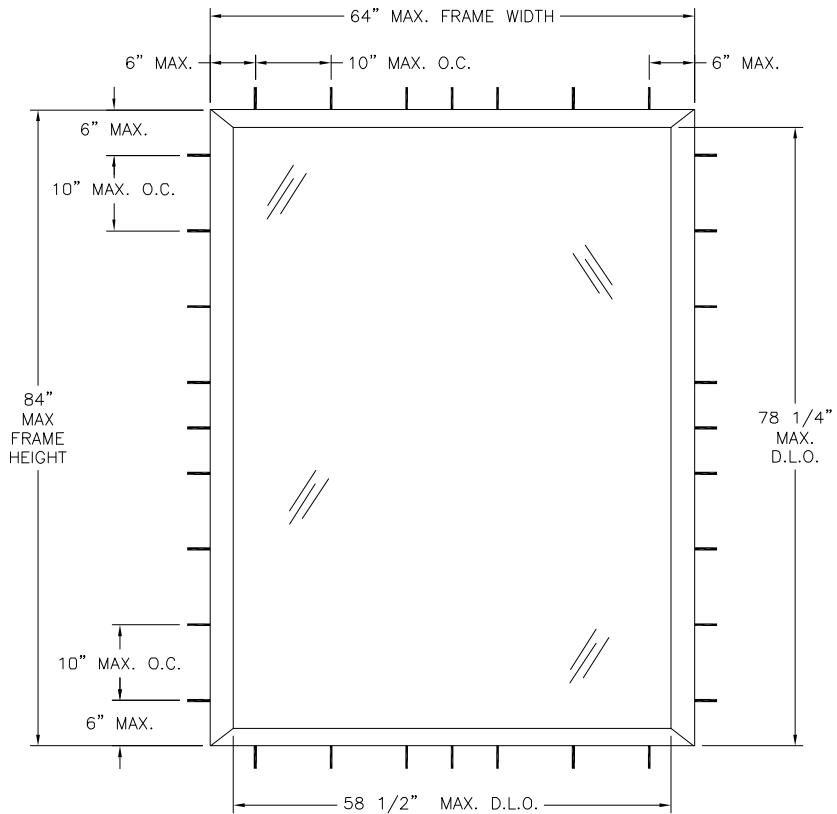
SIGNED: 10/25/2017

TABLE OF CONTENTS	
SHEET NO.	DESCRIPTION
1	NOTES
2	ELEVATIONS
3 - 5	INSTALLATION DETAILS

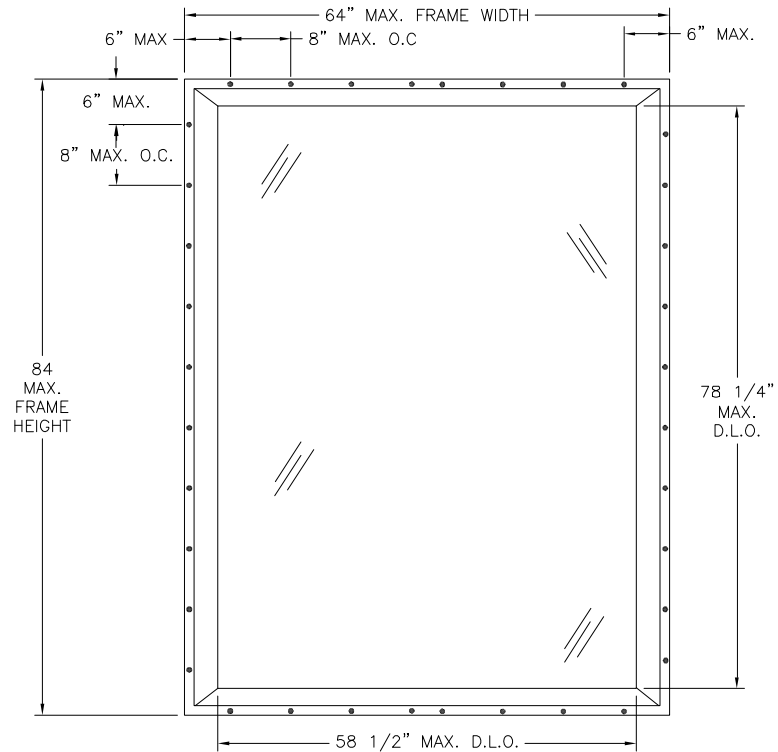
VINYL WINDOW TECHNOLOGIES, INC. 2400 IRVIN COBB DRIVE PADUCAH, KY 42003		
2150 PW NON- IMPACT PVC PICTURE WINDOW 64" X 84" NOTES		
DRAWN: V.L.	DWG NO. 08-00481	REV B
SCALE NTS	DATE 05/19/08	SHEET 1 OF 5



REVISIONS			
REV	DESCRIPTION	DATE	APPROVED
A	REVISED NOTES	3/09/12	R.L.
B	ADDED EDGE DISTANCES	01/21/16	R.L.



2150 NON-IMPACT PVC PW
FRAME INSTALLATION
EXTERIOR VIEW

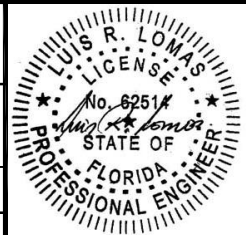


2150 NON-IMPACT PVC PW
FIN INSTALLATION
EXTERIOR VIEW

DESIGN PRESSURE RATING	IMPACT RATING
±50PSF	NONE

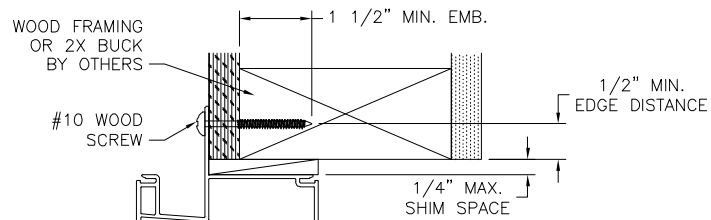
SIGNED: 10/25/2017

VINYL WINDOW TECHNOLOGIES, INC. 2400 IRVIN COBB DRIVE PADUCAH, KY 42003		
2150 PW NON-IMPACT PVC PICTURE WINDOW 64" X 84" ELEVATIONS		
DRAWN: V.L.	DWG NO. 08-00481	REV B
SCALE NTS	DATE 05/19/08	SHEET 2 OF 5

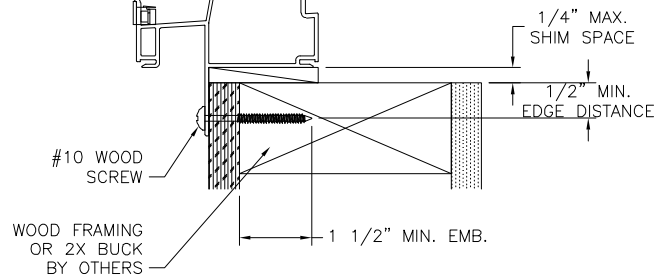


REVISIONS

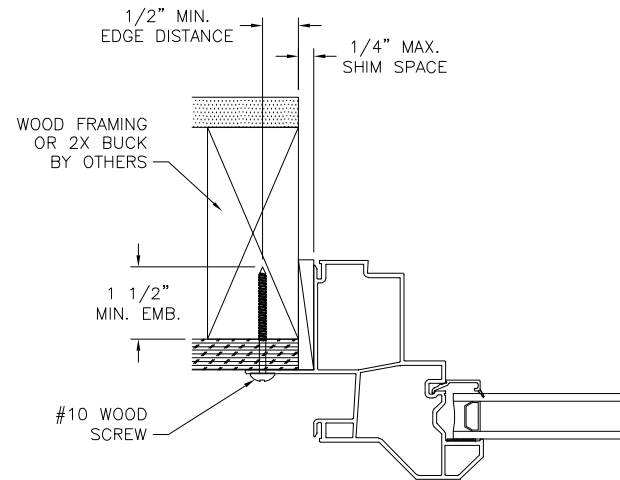
REV	DESCRIPTION	DATE	APPROVED
A	REVISED NOTES	3/09/12	R.L.
B	ADDED EDGE DISTANCES	01/21/16	R.L.



EXTERIOR INTERIOR



HEAD AND SILL
FIN INSTALLATION



JAMB
FIN INSTALLATION

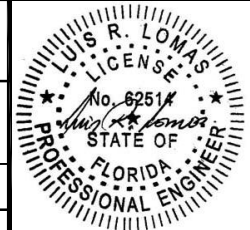
SIGNED: 10/25/2017

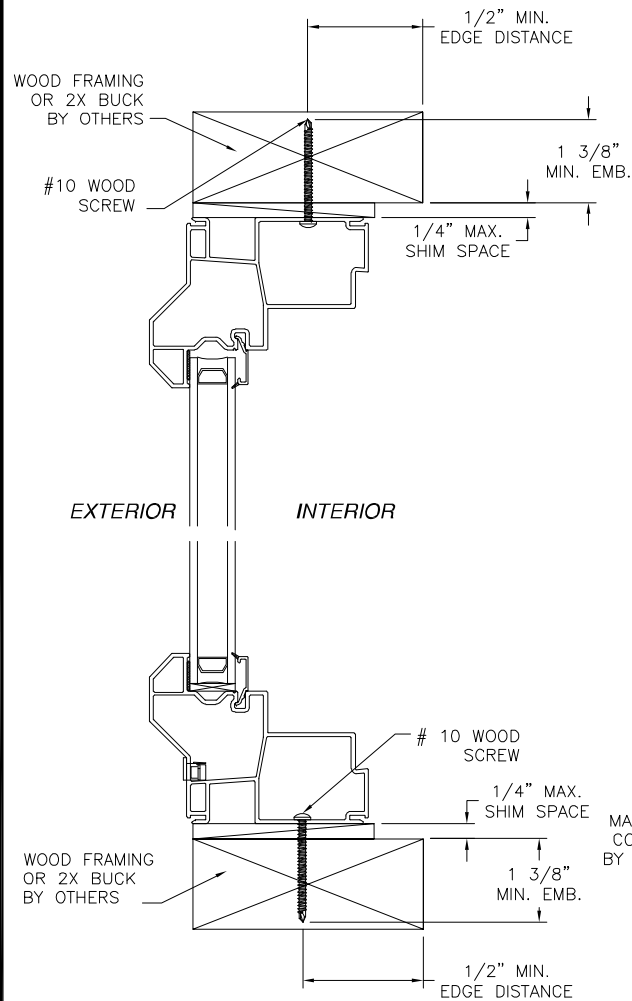
VINYL WINDOW TECHNOLOGIES, INC.

2400 IRVIN COBB DRIVE
PADUCAH, KY 42003

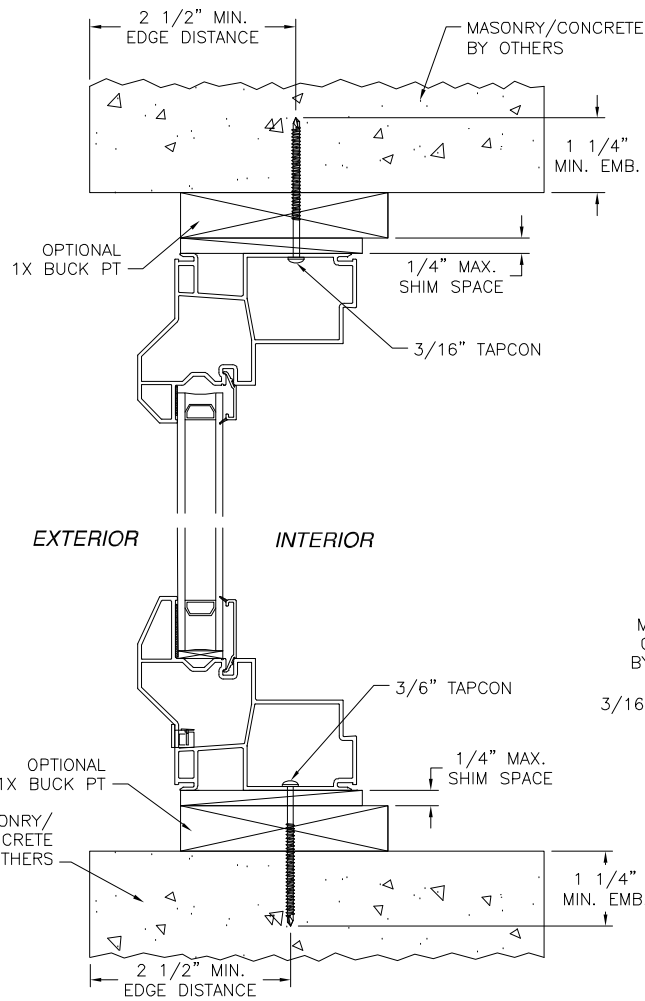
2150 PW NON-IMPACT PVC PICTURE WINDOW
64" X 84"
FIN INSTALLATION DETAILS

DRAWN: V.L.	DWG NO. 08-00481	REV B
SCALE NTS	DATE 05/19/08	SHEET 3 OF 5



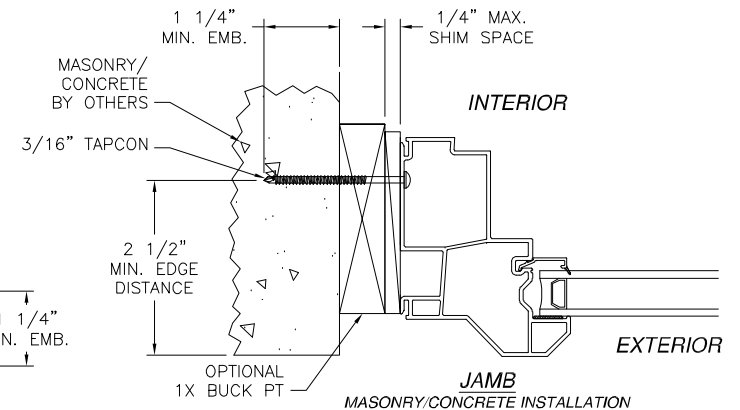
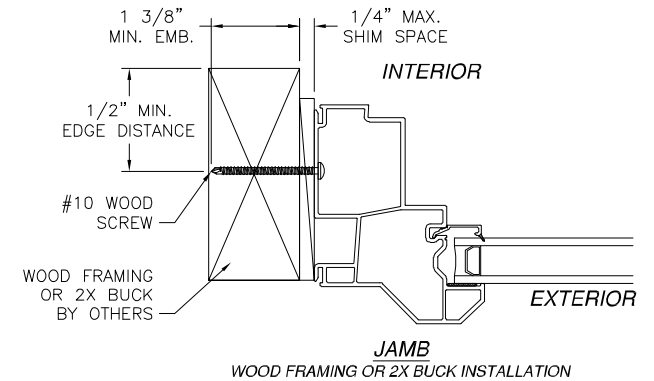


HEAD AND SILL
WOOD FRAMING OR 2X BUCK INSTALLATION



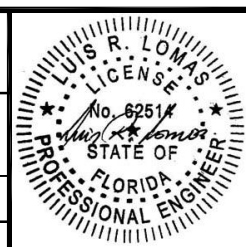
HEAD AND SILL
MASONRY/CONCRETE INSTALLATION

REVISIONS			
REV	DESCRIPTION	DATE	APPROVED
A	REVISED NOTES	3/09/12	R.L.
B	ADDED EDGE DISTANCES	01/21/16	R.L.



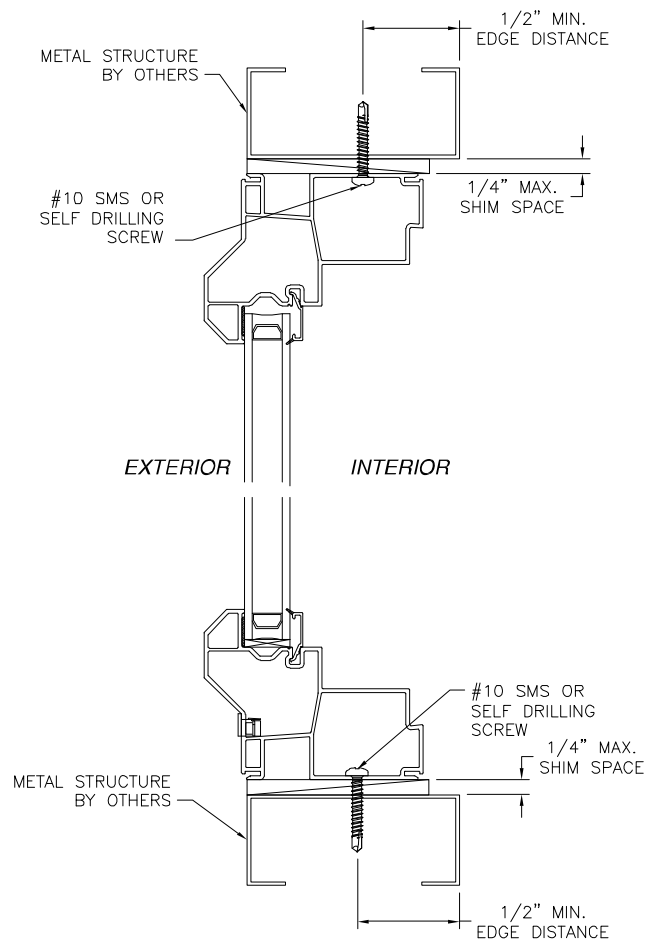
SIGNED: 10/25/2017

VINYL WINDOW TECHNOLOGIES, INC.		
2400 IRVIN COBB DRIVE PADUCAH, KY 42003		
2150 PW NON- IMPACT PVC PICTURE WINDOW 64" X 84" INSTALLATION DETAILS		
DRAWN: V.L.	DWG NO. 08-00481	REV B
SCALE NTS	DATE 05/19/08	SHEET 4 OF 5

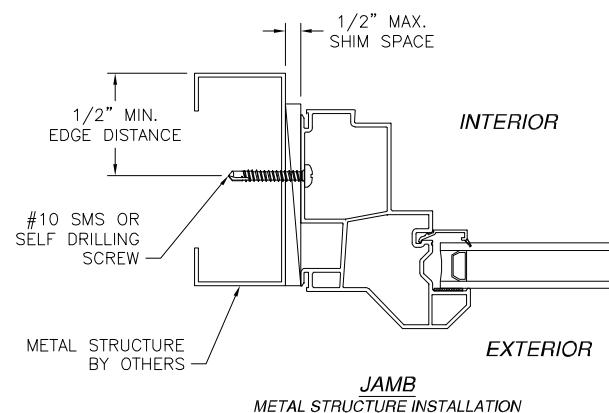


REVISIONS

REV	DESCRIPTION	DATE	APPROVED
A	REVISED NOTES	3/09/12	R.L.
B	ADDED EDGE DISTANCES	01/21/16	R.L.



HEAD AND SILL
METAL STRUCTURE INSTALLATION



SIGNED: 10/25/2017

VINYL WINDOW TECHNOLOGIES, INC.

2400 IRVIN COBB DRIVE
PADUCAH, KY 42003

2150 PW NON-IMPACT PVC PICTURE WINDOW
64" X 84"
INSTALLATION DETAILS

DRAWN: V.L.	DWG NO. 08-00481	REV B
SCALE NTS	DATE 05/19/08	SHEET 5 OF 5

