

REVISIONS			
REV	DESCRIPTION	DATE	APPROVED
F	REVISED ANCHORS	02/05/18	R.L.

NOTES:

1. THE PRODUCT SHOWN HEREIN IS DESIGNED AND MANUFACTURED TO COMPLY WITH REQUIREMENTS OF THE FLORIDA BUILDING CODE.
2. WOOD FRAMING AND MASONRY OPENING TO BE DESIGNED AND ANCHORED TO PROPERLY TRANSFER ALL LOADS TO STRUCTURE. FRAMING AND MASONRY OPENING IS THE RESPONSIBILITY OF THE ARCHITECT OR ENGINEER OF RECORD.
3. 1X BUCK OVER MASONRY/CONCRETE IS OPTIONAL.
4. WHERE SHIM OR BUCK THICKNESS IS LESS THAN 1–1/2” WINDOW UNITS MUST BE ANCHORED THROUGH THE FRAME IN ACCORDANCE WITH MANUFACTURER’S PUBLISHED INSTALLATION INSTRUCTIONS. ANCHORS SHALL BE SECURELY FASTENED DIRECTLY INTO MASONRY, CONCRETE OR OTHER STRUCTURAL SUBSTRATE MATERIAL.
5. WHERE WOOD BUCK THICKNESS IS 1–1/2” OR GREATER, BUCK SHALL BE SECURELY FASTENED TO MASONRY, CONCRETE OR OTHER STRUCTURAL SUBSTRATE. WINDOW UNITS MAY BE ANCHORED THROUGH FRAME TO SECURED WOOD BUCK IN ACCORDANCE WITH MANUFACTURER’S PUBLISHED INSTALLATION INSTRUCTIONS.
6. WHERE 1X BUCK IS NOT USED DISSIMILAR MATERIALS MUST BE SEPARATED WITH APPROVED COATING OR MEMBRANE. SELECTION OF COATING OR MEMBRANE IS THE RESPONSIBILITY OF THE ARCHITECT OR ENGINEER OF RECORD.
7. BUCKS SHALL EXTEND BEYOND WINDOW INTERIOR FACE SO THAT FULL FRAME SUPPORT IS PROVIDED.
8. FOR FIN INSTALLATION SHIM AS NEEDED. FOR FRAME INSTALLATION SHIM AS REQUIRED AT EACH ANCHOR LOCATION WITH LOAD BEARING SHIM. SHIM WHERE SPACE OF 1/16” OR GREATER OCCURS. MAXIMUM ALLOWABLE SHIM STACK TO BE 1/4”.
9. SHIMS SHALL BE LOCATED, APPLIED AND MADE FROM MATERIALS AND THICKNESS CAPABLE OF SUSTAINING APPLICABLE LOADS.
10. WIND LOAD DURATION FACTOR Cd=1.6 WAS USED FOR WOOD ANCHOR CALCULATIONS.
11. FRAME MATERIAL: EXTRUDED RIGID PVC.
12. UNITS MUST BE GLAZED PER ASTM E1300–04, SEE SHEET 2 FOR GLASS DETAILS.
13. APPROVED IMPACT PROTECTIVE SYSTEM IS NOT REQUIRED FOR THIS PRODUCT IN WIND BORNE DEBRIS REGIONS.
14. FOR ANCHORING THROUGH FIN INTO WOOD FRAMING OR 2X BUCK USE #8 WOOD SCREWS WITH SUFFICIENT LENGTH TO ACHIEVE A 1 1/4” MINIMUM EMBEDMENT INTO SUBSTRATE. LOCATE ANCHORS AS SHOWN IN ELEVATIONS AND INSTALLATION DETAILS.

15. FOR ANCHORING THROUGH FRAME INTO WOOD FRAMING OR 2X BUCK USE #8 WOOD SCREWS WITH SUFFICIENT LENGTH TO ACHIEVE A 1 1/4” MINIMUM EMBEDMENT INTO SUBSTRATE. LOCATE ANCHORS AS SHOWN IN ELEVATIONS AND INSTALLATION DETAILS.
16. FOR ANCHORING THROUGH FRAME INTO MASONRY/CONCRETE USE 3/16” TAPCONS WITH SUFFICIENT LENGTH TO ACHIEVE A 1 1/4” MINIMUM EMBEDMENT INTO SUBSTRATE WITH 2 1/2” MINIMUM EDGE DISTANCE. LOCATE ANCHORS AS SHOWN IN ELEVATIONS AND INSTALLATION DETAILS.
17. FOR ANCHORING THROUGH FRAME INTO METAL STRUCTURE USE #8 SMS OR SELF DRILLING SCREWS WITH SUFFICIENT LENGTH TO ACHIEVE 3 THREADS MINIMUM BEYOND STRUCTURE INTERIOR WALL. LOCATE ANCHORS AS SHOWN IN ELEVATIONS AND INSTALLATION DETAILS.
18. ALL FASTENERS TO BE CORROSION RESISTANT.
19. INSTALLATION ANCHORS SHALL BE INSTALLED IN ACCORDANCE WITH ANCHOR MANUFACTURER’S INSTALLATION INSTRUCTIONS AND ANCHORS SHALL NOT BE USED IN SUBSTRATES WITH STRENGTHS LESS THAN THE MINIMUM STRENGTH SPECIFIED BELOW:

A. WOOD: MINIMUM SPECIFIC GRAVITY OF G=0.42

B. CONCRETE: MINIMUM COMPRESSIVE STRENGTH OF 2,000 PSI.

C. MASONRY: HOLLOW/FILLED BLOCK PER ASTM C90 WITH f’_m=2,000PSI MINIMUM.

D. METAL STRUCTURE: STEEL 18GA (.048”) FY=33KSI/FU=52KSI OR ALUMINUM 6063–T5 FU=30KSI 1/8” THICK MINIMUM.

TABLE OF CONTENTS	
SHEET NO.	DESCRIPTION
1	NOTES
2	ELEVATIONS
3	GLAZING DETAIL
4 – 13	INSTALLATION DETAILS

VIWIN TECH WINDOWS AND DOORS

2400 IRVIN COBB DRIVE
PADUCAH, KY 42003

SHORELINE 3100 SINGLE GLIDER

74” X 63”

NOTES

DRAWN:
R.L.

DWG NO.
08–00207

REV
F

SCALE NTS

DATE 11/15/06

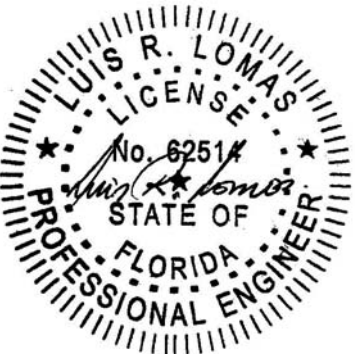
SHEET 1 OF 13

L. ROBERTO LOMAS P.E.

1432 WOODFORD RD LEWISVILLE, NC 27023

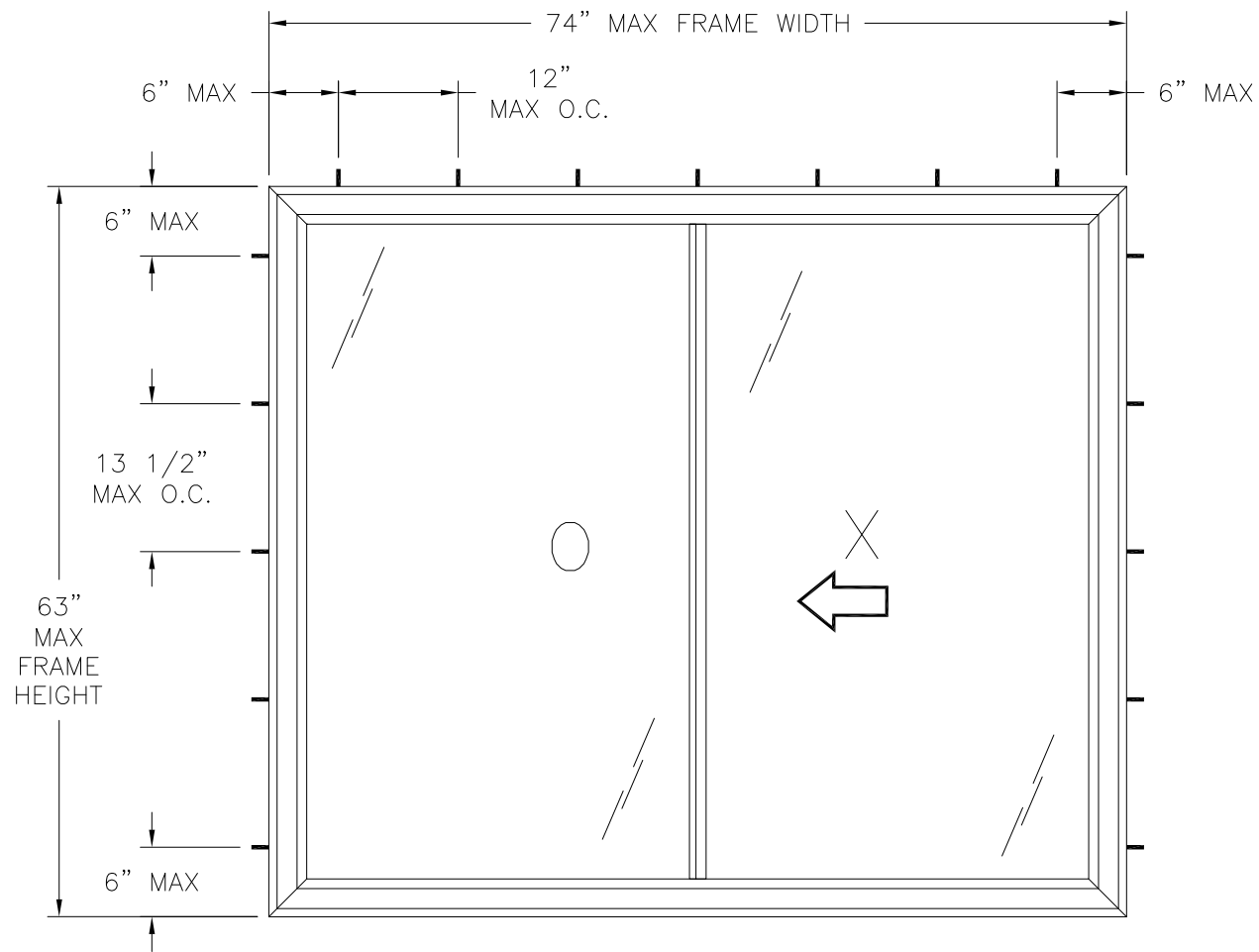
434-688-0609 rllomas@lrlomaspe.com

SIGNED: 02/05/2018

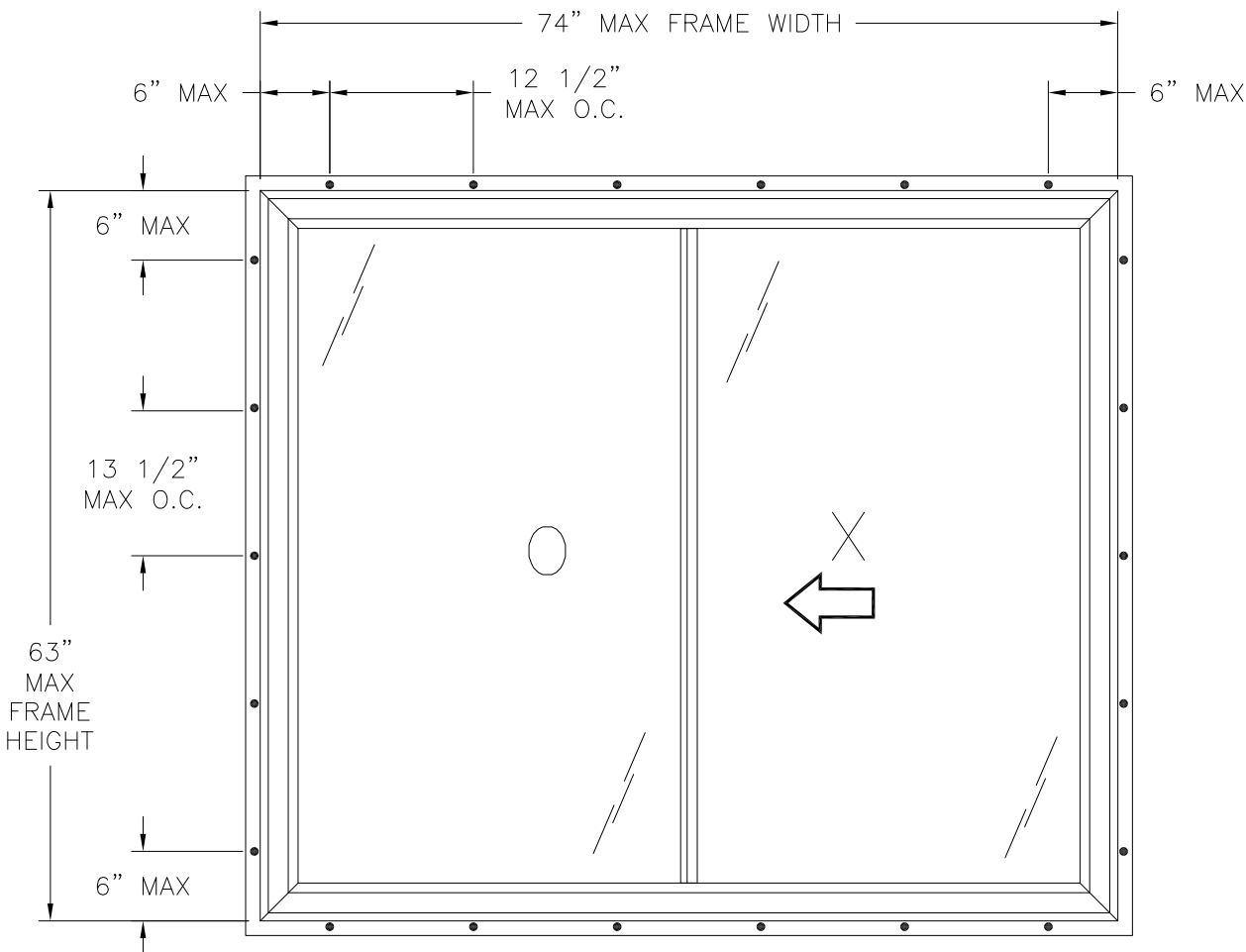


Luis R. Lomas P.E.
FL No.: 62514

REVISIONS			
REV	DESCRIPTION	DATE	APPROVED
F	REVISED ANCHORS	02/05/18	R.L.



SHORELINE 3100 SINGLE GLIDER
EXTERIOR VIEW
FRAME INSTALLATION



SHORELINE 3100 SINGLE GLIDER
EXTERIOR VIEW
FIN INSTALLATION

DESIGN PRESSURE RATING	IMPACT RATING
±50.0PSF	LARGE MISSILE IMPACT

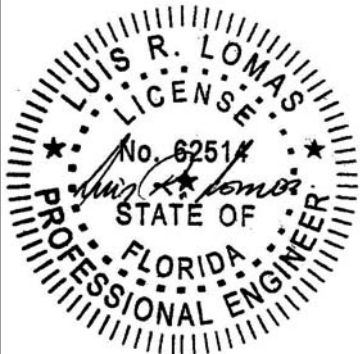
MISSILE LEVEL D, WIND ZONE 4, & HVHZ

- NOTES:
1. MAXIMUM SASH SIZE: 36 1/4" X 60"
 2. MAXIMUM D.L.O.: 33 3/16" X 57 7/8"

HARDWARE SCHEDULE	
A.	(1) METAL SPRING LOADED LOCK 8" FROM EACH END OF ACTIVE MEETING STILE
B.	(1) METAL INTERLOCKING TILT LATCH AT TOP OF STILES
C.	(1) EXTRUDED ALUMINUM REINFORCEMENT BAR AT ACTIVE PANEL MEMBER
D.	(1) EXTRUDED ALUMINUM REINFORCEMENT BAR AT FIXED MEETING STILE

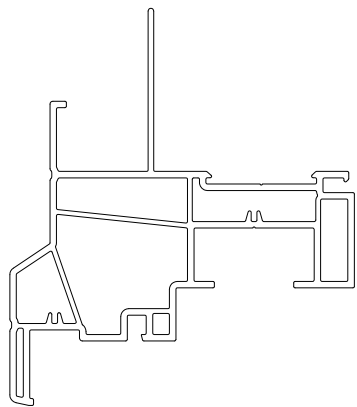
VIWIN TECH WINDOWS AND DOORS 2400 IRVIN COBB DRIVE PADUCAH, KY 42003		
SHORELINE 3100 SINGLE GLIDER 74" X 63" ELEVATIONS		
DRAWN: R.L.	DWG NO. 08-00207	REV F
SCALE NTS	DATE 11/15/06	SHEET 2 OF 13
L. ROBERTO LOMAS P.E. 1432 WOODFORD RD LEWISVILLE, NC 27023 434-688-0609 rllomas@lrlomaspe.com		

SIGNED: 02/05/2018

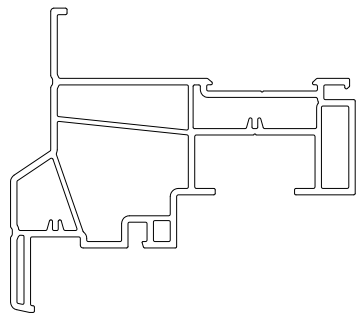


Luis R. Lomas P.E.
FL No.: 62514

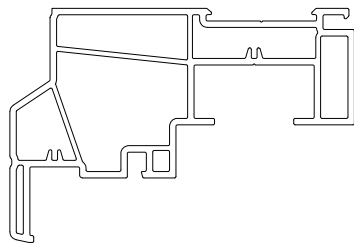
REVISIONS			
REV	DESCRIPTION	DATE	APPROVED
F	REVISED ANCHORS	02/05/18	R.L.



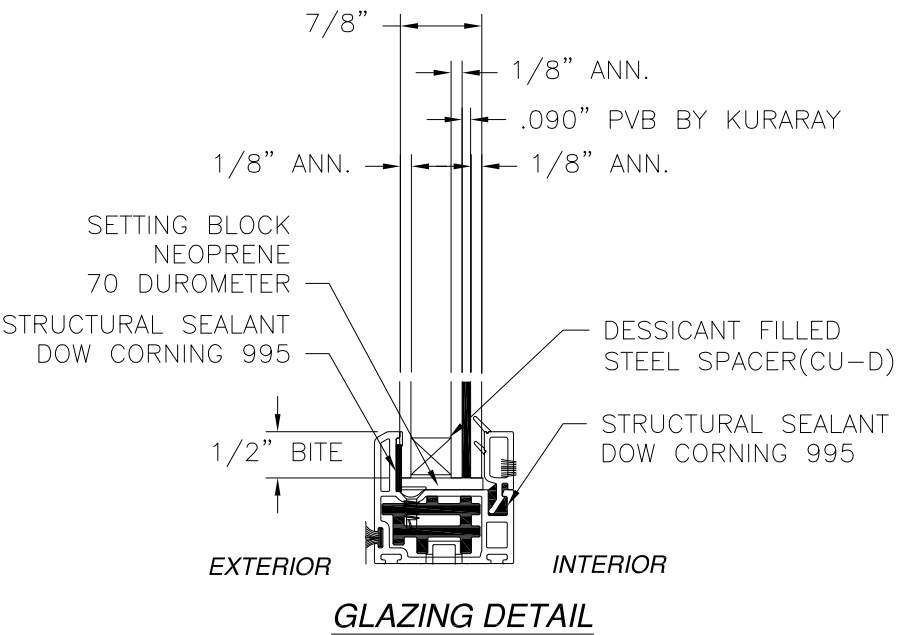
4252 FRAME (ALTERNATE)
FIN INSTALLATION



4252 FRAME (ALTERNATE)
FLANGE INSTALLATION



4252 FRAME (ALTERNATE)
FLUSH INSTALLATION

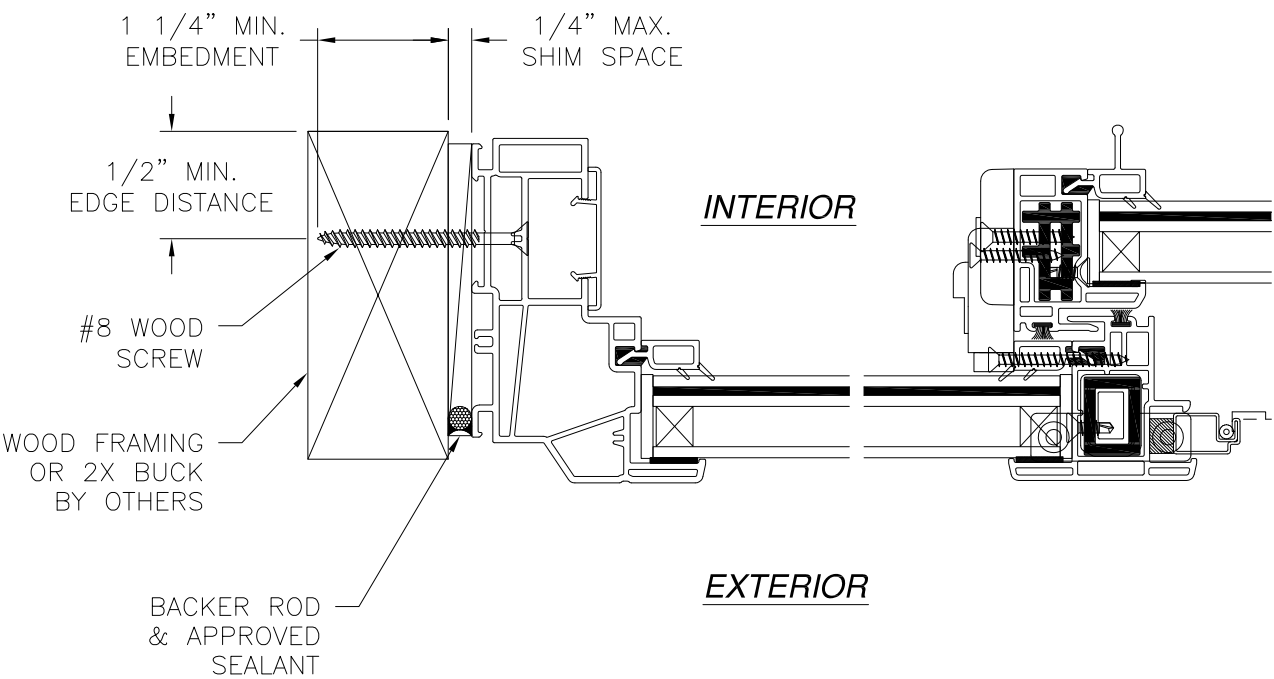
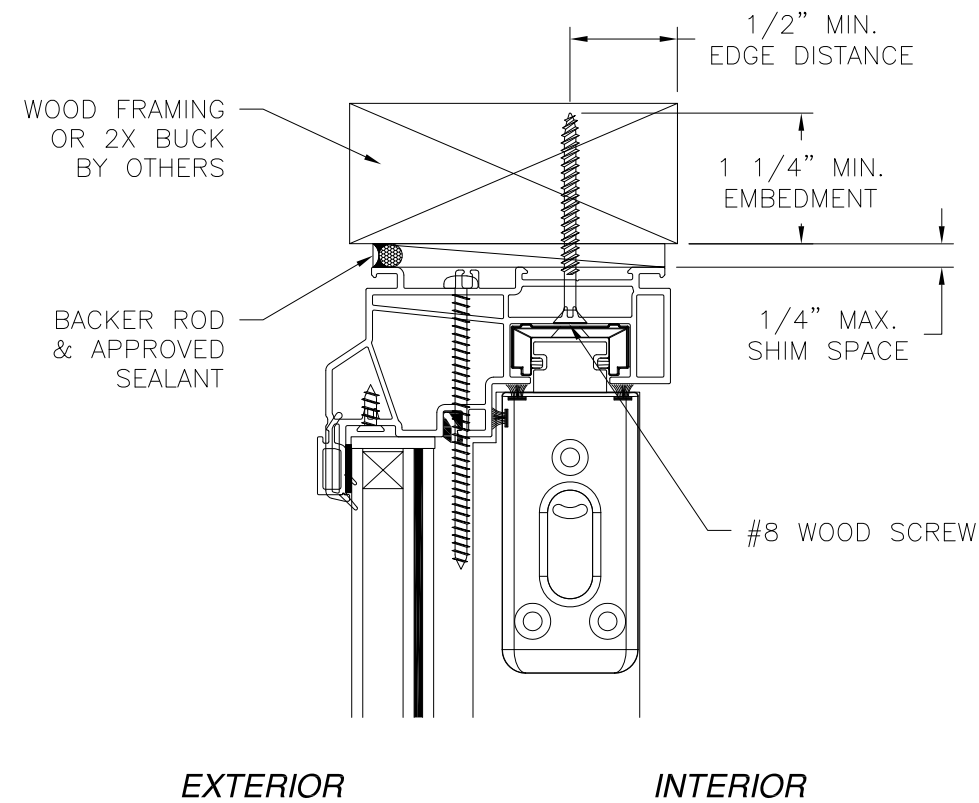


SIGNED: 02/05/2018

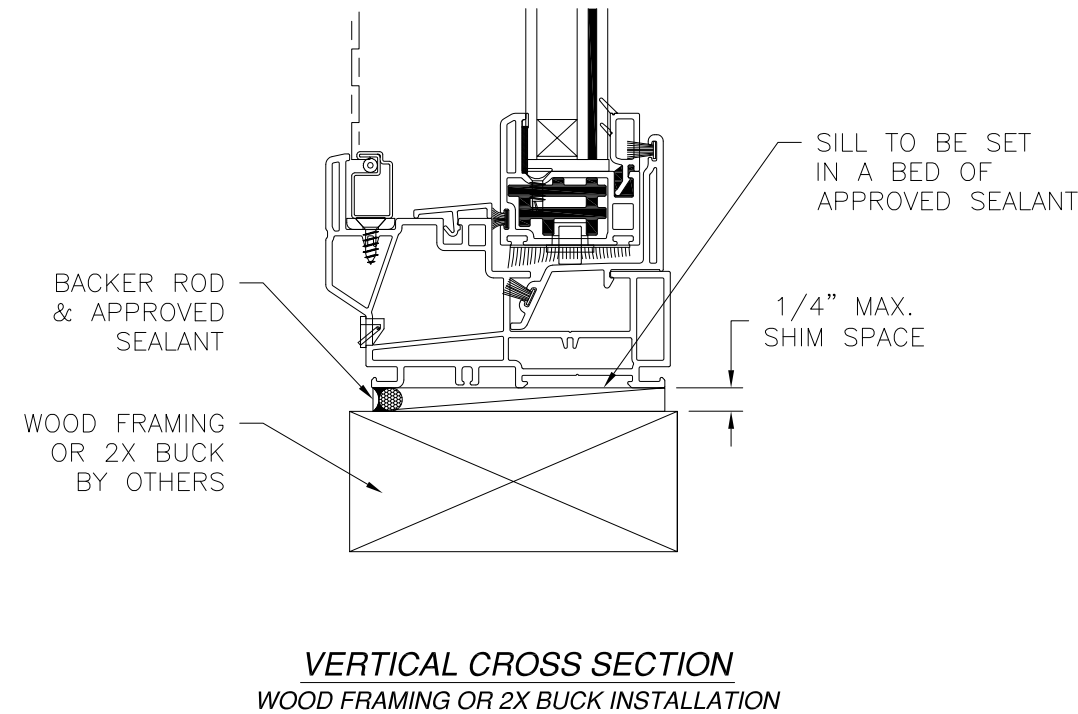
VIWIN TECH WINDOWS AND DOORS 2400 IRVIN COBB DRIVE PADUCAH, KY 42003		
SHORELINE 3100 SINGLE GLIDER 74" X 63" GLAZING DETAILS		
DRAWN: R.L.	DWG NO. 08-00207	REV F
SCALE NTS	DATE 11/15/06	SHEET 3 OF 13
L. ROBERTO LOMAS P.E. 1432 WOODFORD RD LEWISVILLE, NC 27023 434-688-0609 rllomas@lrlomaspe.com		

Luis R. Lomas P.E.
FL No.: 62514

REVISIONS			
REV	DESCRIPTION	DATE	APPROVED
F	REVISED ANCHORS	02/05/18	R.L.



JAMB INSTALLATION DETAIL
WOOD FRAMING OR 2X BUCK INSTALLATION



- NOTES:**
1. INTERIOR AND EXTERIOR FINISHES, BY OTHERS, NOT SHOWN FOR CLARITY.
 2. PERIMETER AND JOINT SEALANT BY OTHERS TO BE DESIGNED IN ACCORDANCE WITH ASTM E2112

SIGNED: 02/05/2018

VIWIN TECH WINDOWS AND DOORS

2400 IRVIN COBB DRIVE
PADUCAH, KY 42003

SHORELINE 3100 SINGLE GLIDER

74" X 63"

FRAME INSTALLATION DETAILS

DRAWN: R.L.

DWG NO. 08-00207

REV F

SCALE NTS

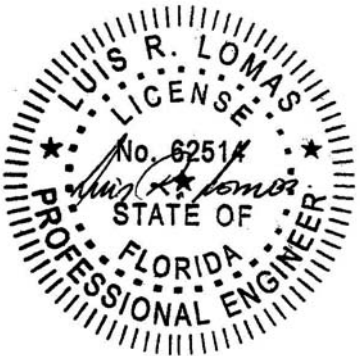
DATE 11/15/06

SHEET 4 OF 13

L. ROBERTO LOMAS P.E.

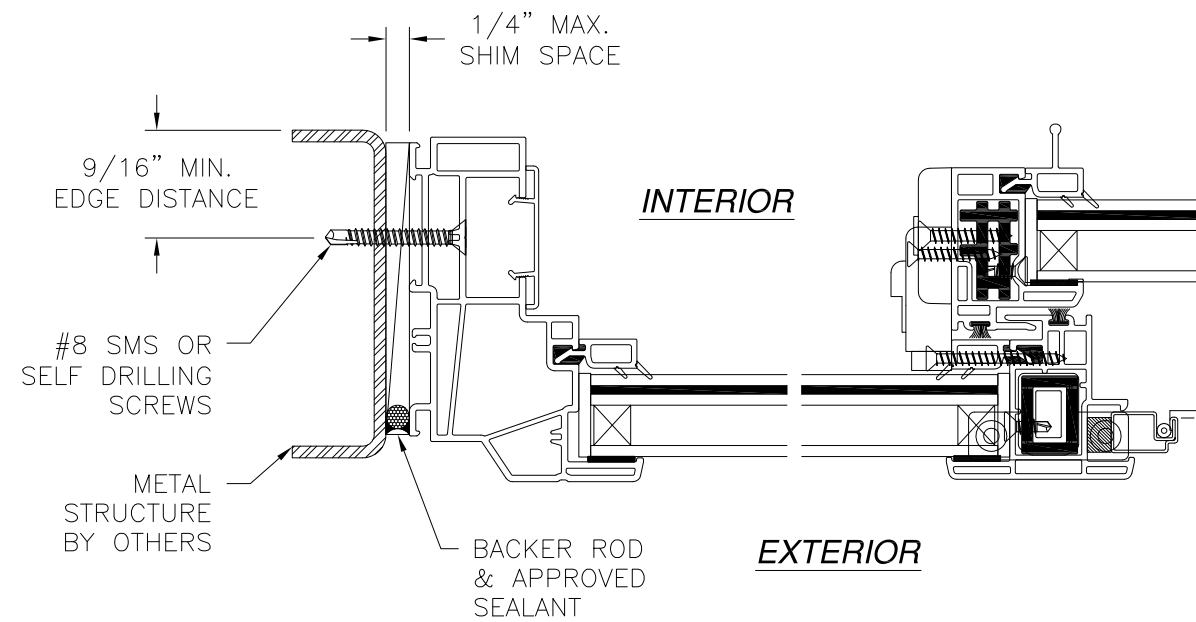
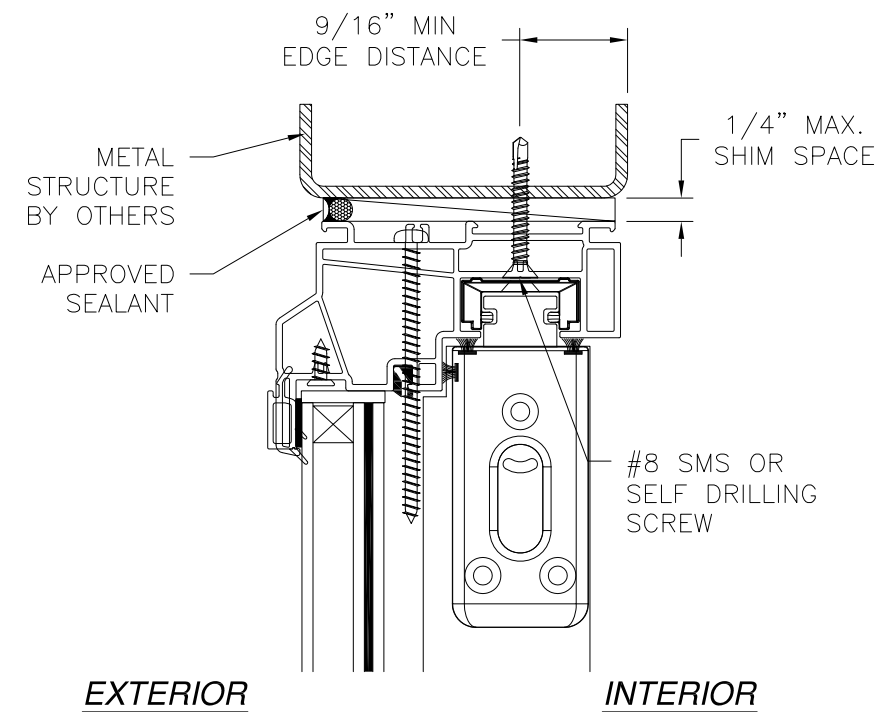
1432 WOODFORD RD LEWISVILLE, NC 27023

434-688-0609 rllomas@lrlomaspe.com

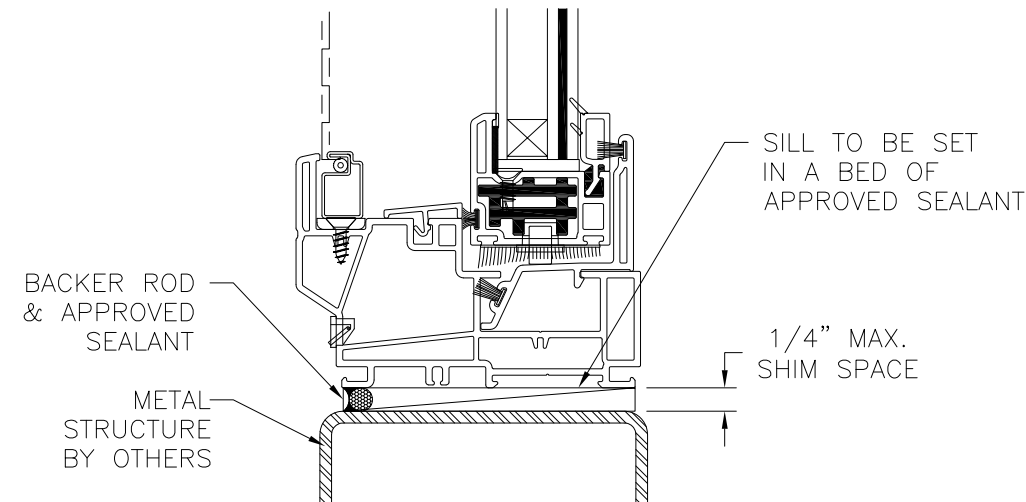


Luis R. Lomas P.E.
FL No.: 62514

REVISIONS			
REV	DESCRIPTION	DATE	APPROVED
F	REVISED ANCHORS	02/05/18	R.L.



JAMB INSTALLATION DETAIL
METAL STRUCTURE INSTALLATION



VERTICAL CROSS SECTION
METAL STRUCTURE INSTALLATION

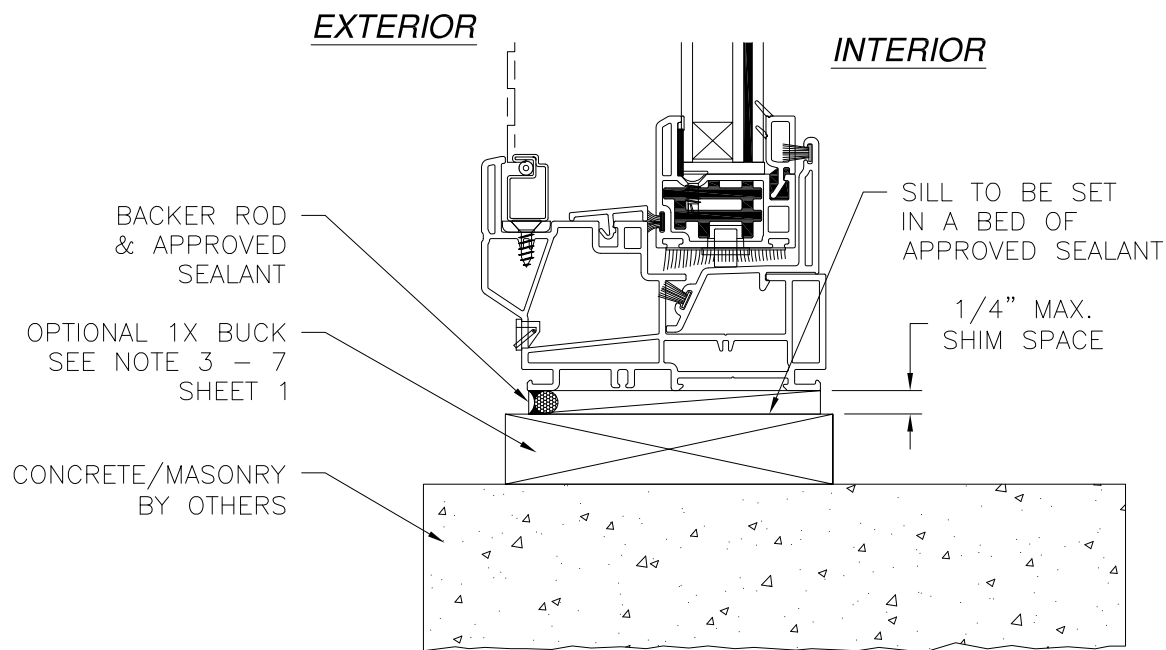
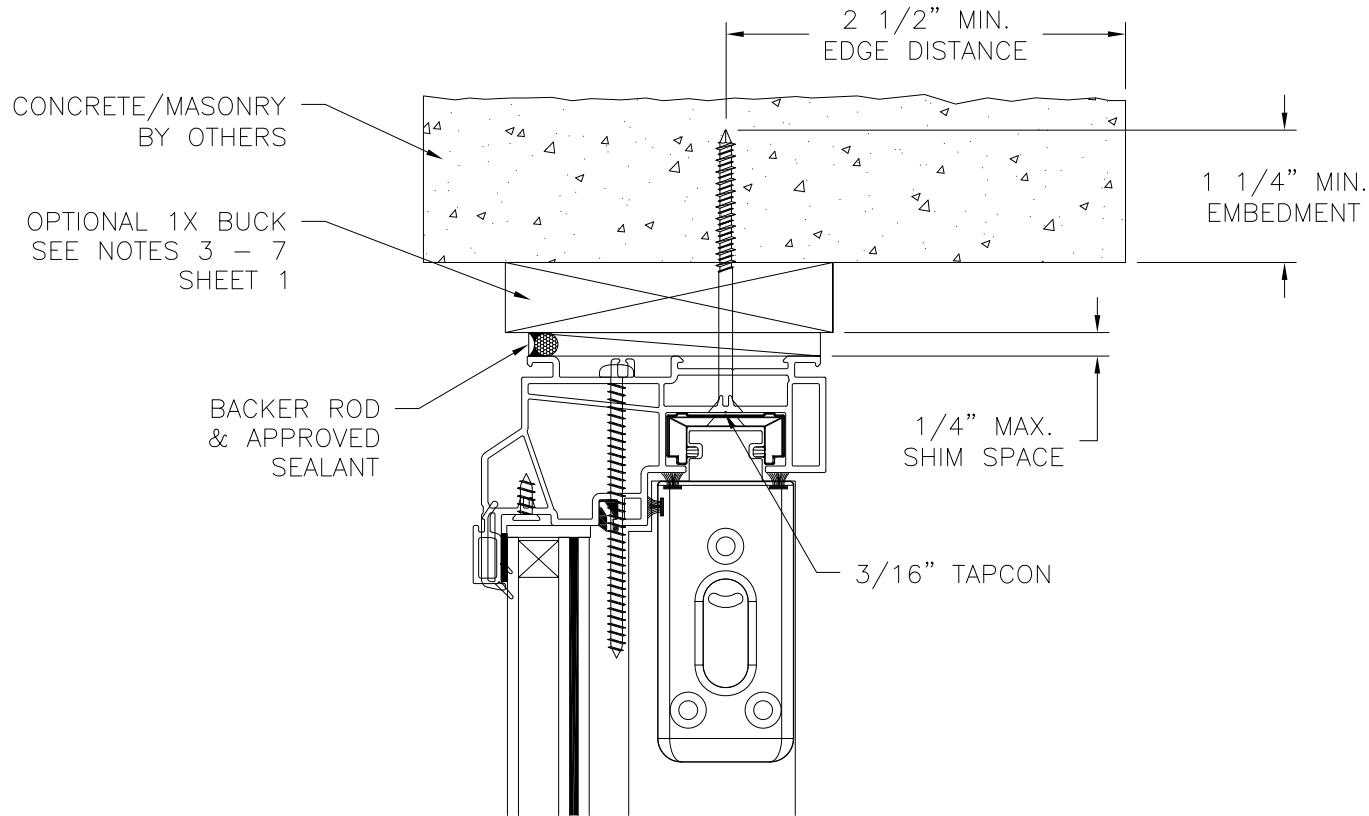
- NOTES:**
1. INTERIOR AND EXTERIOR FINISHES, BY OTHERS, NOT SHOWN FOR CLARITY.
 2. PERIMETER AND JOINT SEALANT BY OTHERS TO BE DESIGNED IN ACCORDANCE WITH ASTM E2112

SIGNED: 02/05/2018

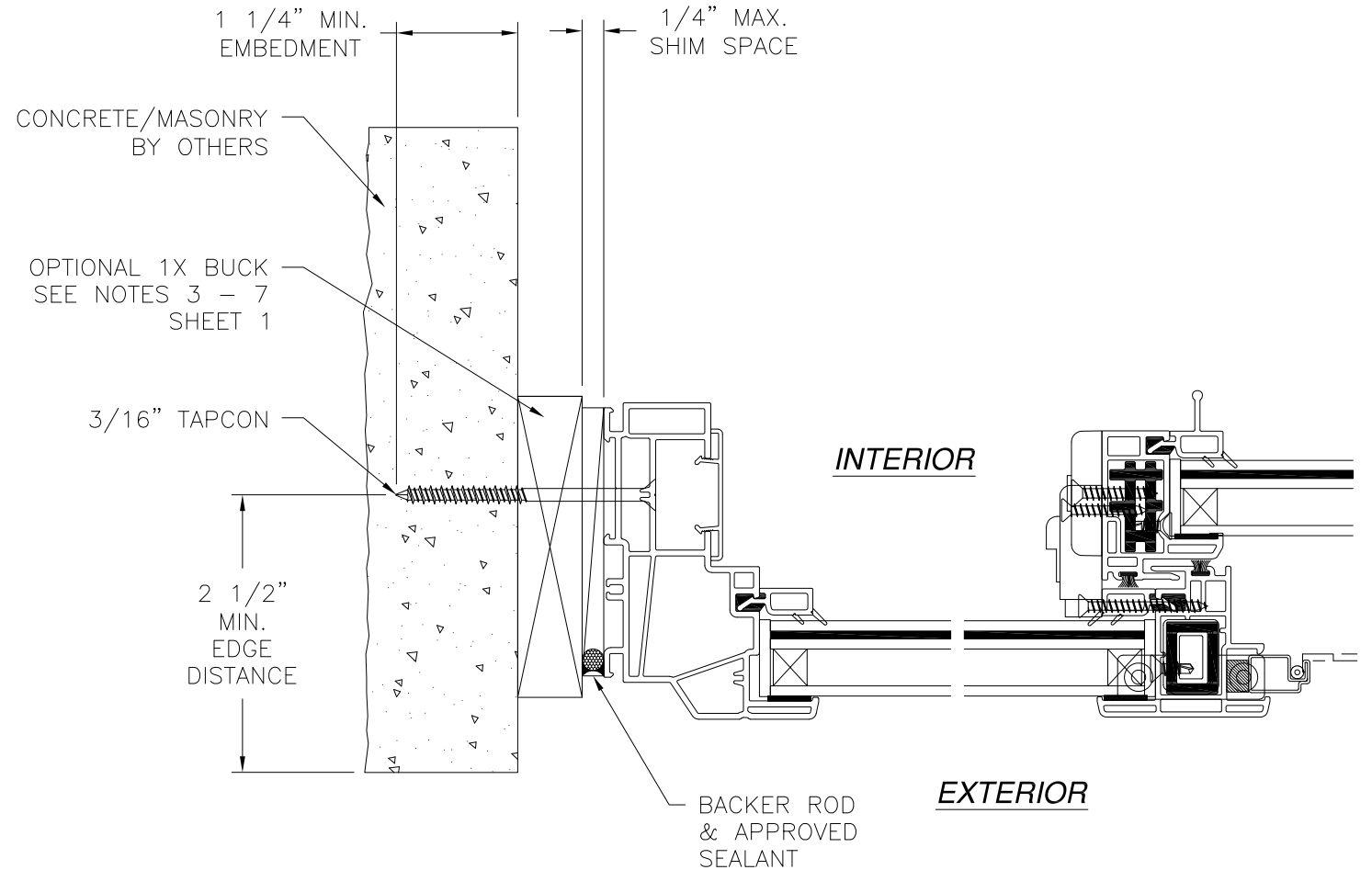
VIWIN TECH WINDOWS AND DOORS 2400 IRVIN COBB DRIVE PADUCAH, KY 42003			
SHORELINE 3100 SINGLE GLIDER 74" X 63" FRAME INSTALLATION DETAILS			
DRAWN: R.L.	DWG NO. 08-00207	REV F	
SCALE NTS	DATE 11/15/06	SHEET 5 OF 13	
L. ROBERTO LOMAS P.E. 1432 WOODFORD RD LEWISVILLE, NC 27023 434-688-0609 rllomas@rlomaspe.com			

Luis R. Lomas P.E.
FL No.: 62514

REVISIONS			
REV	DESCRIPTION	DATE	APPROVED
F	REVISED ANCHORS	02/05/18	R.L.



VERTICAL CROSS SECTION
CONCRETE/MASONRY INSTALLATION



JAMB INSTALLATION DETAIL
CONCRETE/MASONRY INSTALLATION

- NOTES:**
1. INTERIOR AND EXTERIOR FINISHES, BY OTHERS, NOT SHOWN FOR CLARITY.
 2. PERIMETER AND JOINT SEALANT BY OTHERS TO BE DESIGNED IN ACCORDANCE WITH ASTM E2112

SIGNED: 02/05/2018

VIWIN TECH WINDOWS AND DOORS

2400 IRVIN COBB DRIVE
PADUCAH, KY 42003

SHORELINE 3100 SINGLE GLIDER

74" X 63"

FRAME INSTALLATION DETAILS

DRAWN: R.L.

DWG NO. 08-00207

REV F

SCALE NTS

DATE 11/15/06

SHEET 6 OF 13

L. ROBERTO LOMAS P.E.

1432 WOODFORD RD LEWISVILLE, NC 27023

434-688-0609 rllomas@lrlomaspe.com

LUIS R. LOMAS

LICENS. M. S.

No. 62514

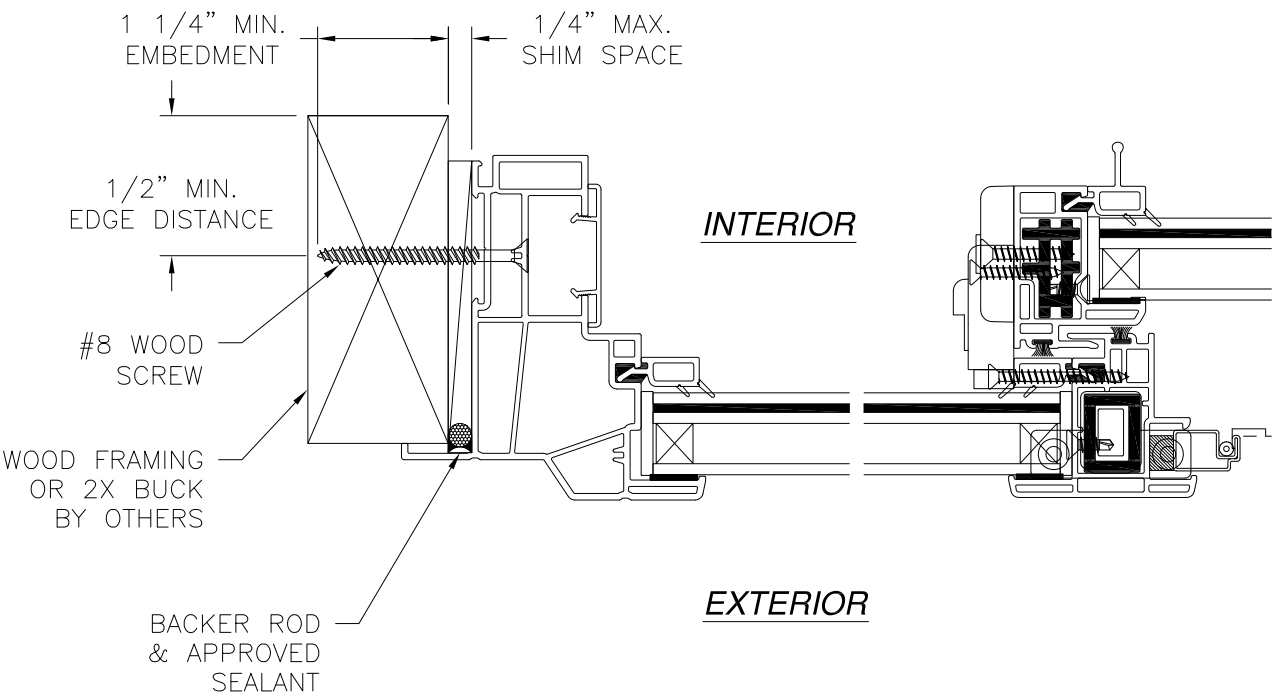
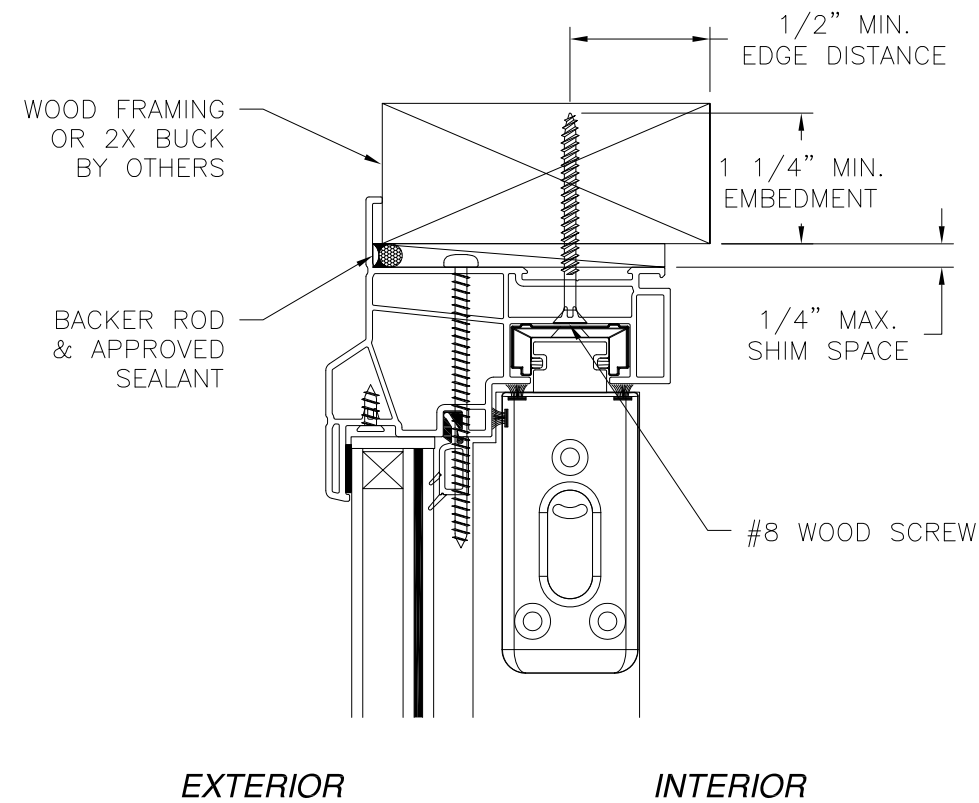
STATE OF FLORIDA

PROFESSIONAL ENGINEER

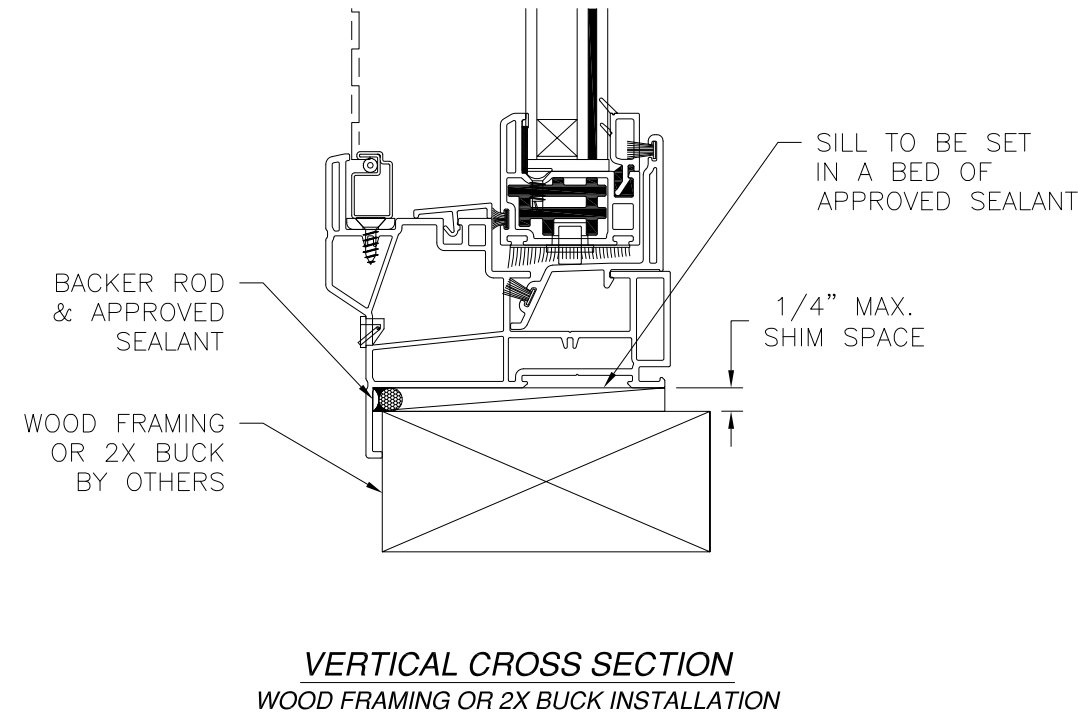
Luis R. Lomas P.E.

FL No.: 62514

REVISIONS			
REV	DESCRIPTION	DATE	APPROVED
F	REVISED ANCHORS	02/05/18	R.L.



JAMB INSTALLATION DETAIL
WOOD FRAMING OR 2X BUCK INSTALLATION



- NOTES:**
1. INTERIOR AND EXTERIOR FINISHES, BY OTHERS, NOT SHOWN FOR CLARITY.
 2. PERIMETER AND JOINT SEALANT BY OTHERS TO BE DESIGNED IN ACCORDANCE WITH ASTM E2112

VIWIN TECH WINDOWS AND DOORS

2400 IRVIN COBB DRIVE
PADUCAH, KY 42003

SHORELINE 3100 SINGLE GLIDER

74" X 63"

FLANGE INSTALLATION DETAILS

DRAWN: R.L.

DWG NO. 08-00207

REV F

SCALE NTS

DATE 11/15/06

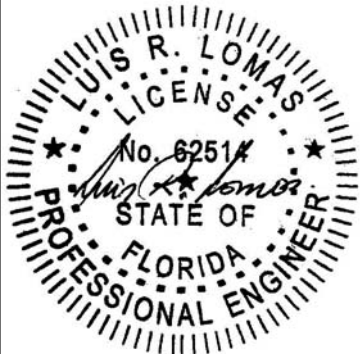
SHEET 7 OF 13

L. ROBERTO LOMAS P.E.

1432 WOODFORD RD LEWISVILLE, NC 27023

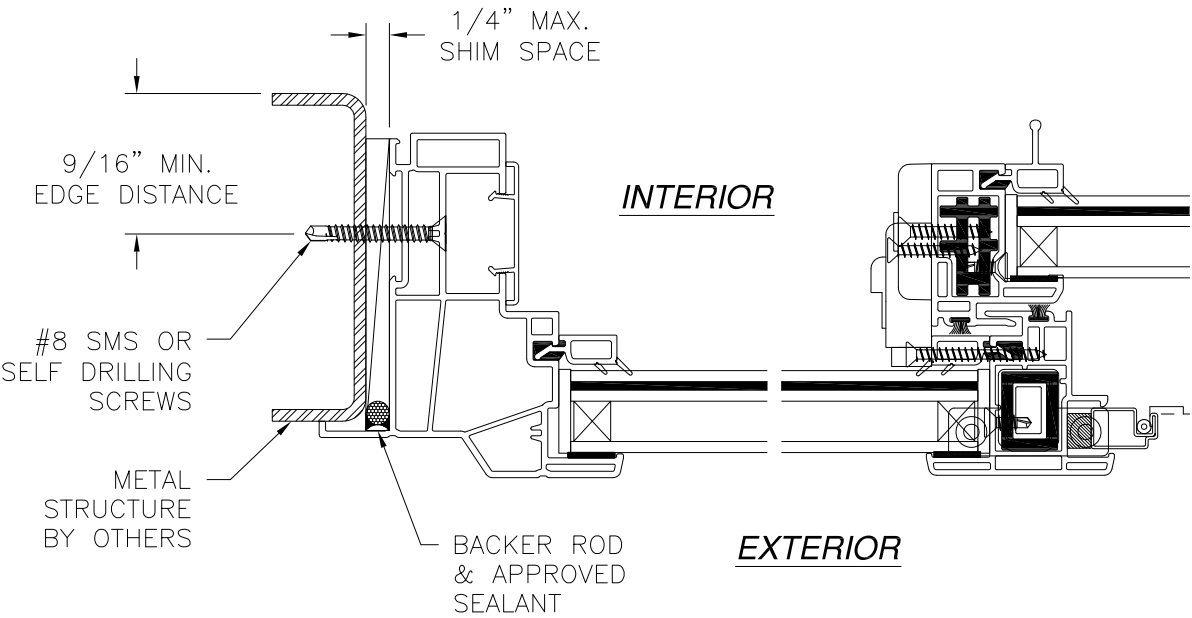
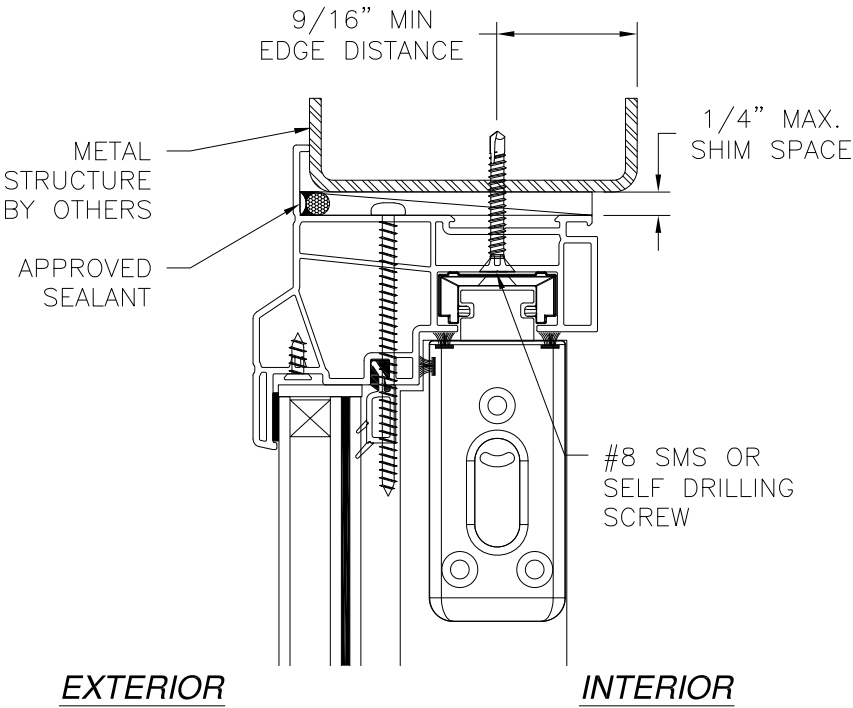
434-688-0609 rllomas@lrlomaspe.com

SIGNED: 02/05/2018

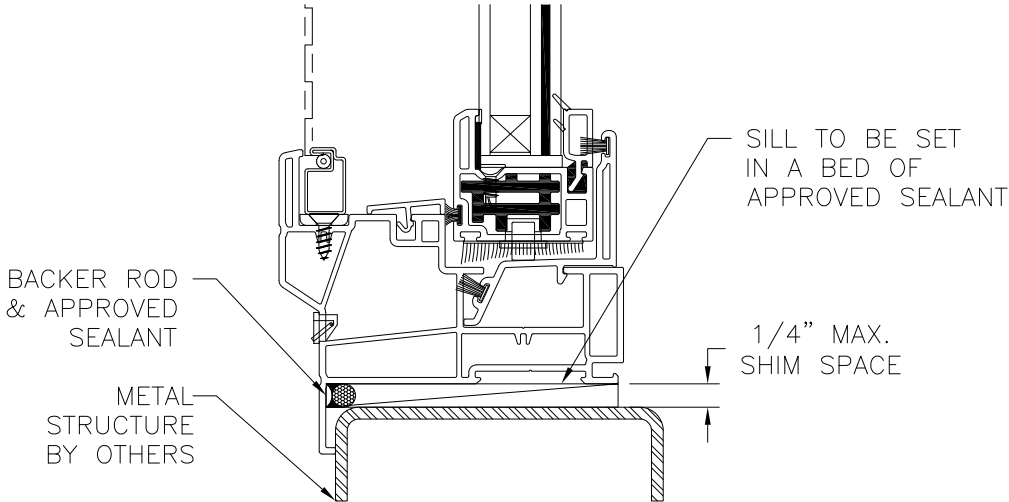


Luis R. Lomas P.E.
FL No.: 62514

REVISIONS			
REV	DESCRIPTION	DATE	APPROVED
F	REVISED ANCHORS	02/05/18	R.L.



JAMB INSTALLATION DETAIL
METAL STRUCTURE INSTALLATION



VERTICAL CROSS SECTION
METAL STRUCTURE INSTALLATION

- NOTES:**
1. INTERIOR AND EXTERIOR FINISHES, BY OTHERS, NOT SHOWN FOR CLARITY.
 2. PERIMETER AND JOINT SEALANT BY OTHERS TO BE DESIGNED IN ACCORDANCE WITH ASTM E2112

SIGNED: 02/05/2018

VIWIN TECH WINDOWS AND DOORS

2400 IRVIN COBB DRIVE
PADUCAH, KY 42003

SHORELINE 3100 SINGLE GLIDER
74" X 63"

FLANGE INSTALLATION DETAILS

DRAWN:
R.L.

DWG NO.
08-00207

REV
F

SCALE NTS

DATE 11/15/06

SHEET 8 OF 13

L. ROBERTO LOMAS P.E.

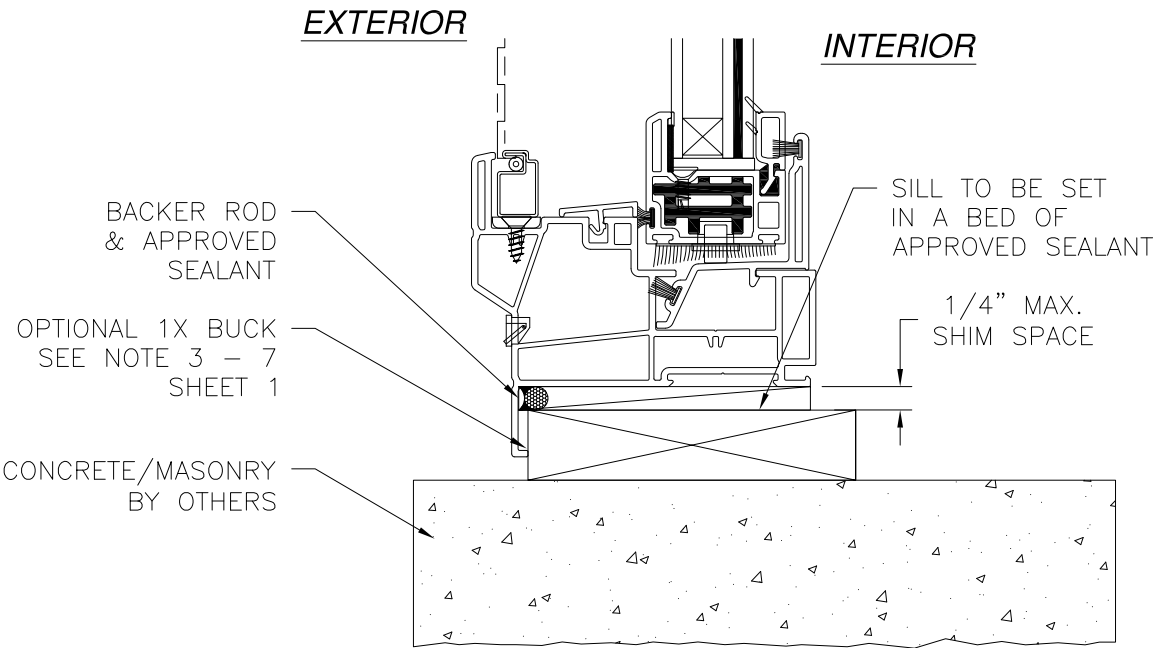
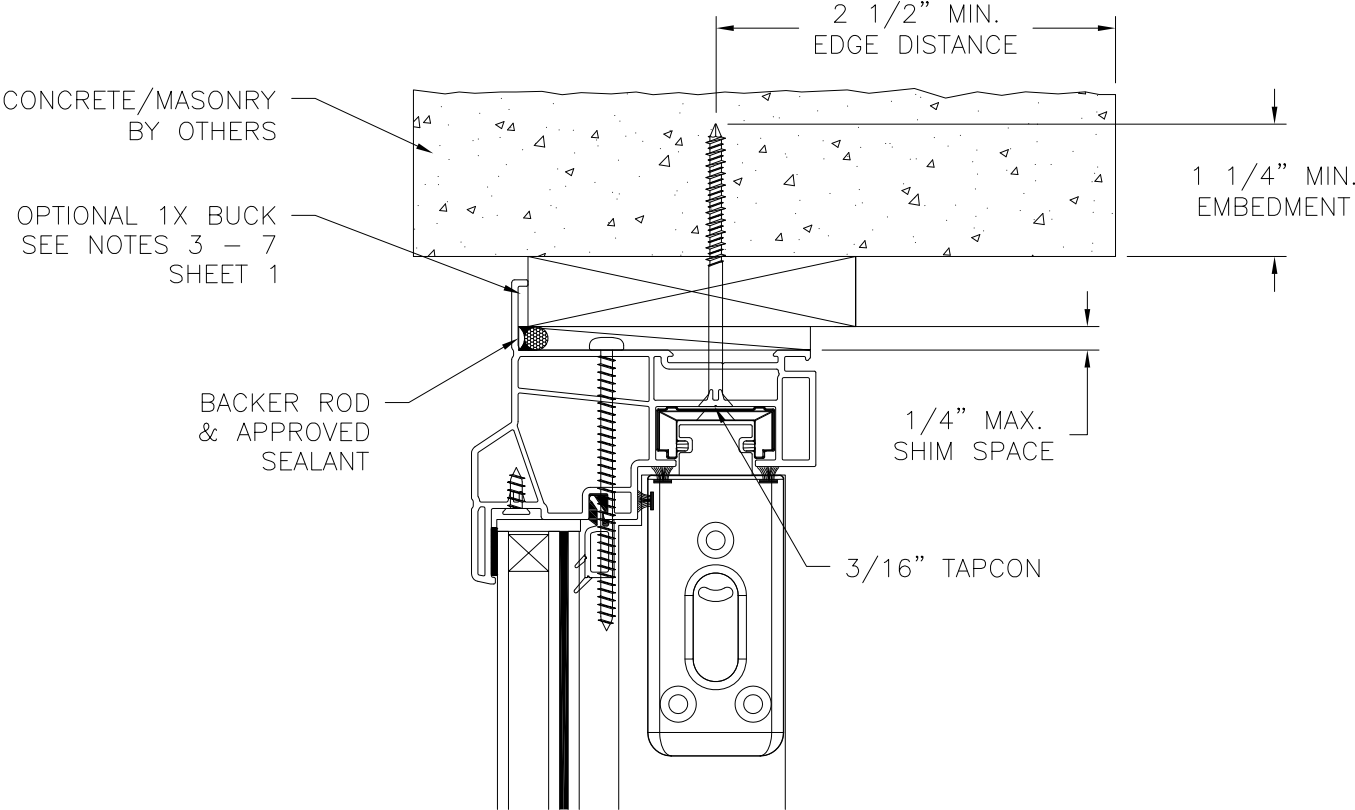
1432 WOODFORD RD LEWISVILLE, NC 27023

434-688-0609 rllomas@lrlomaspe.com

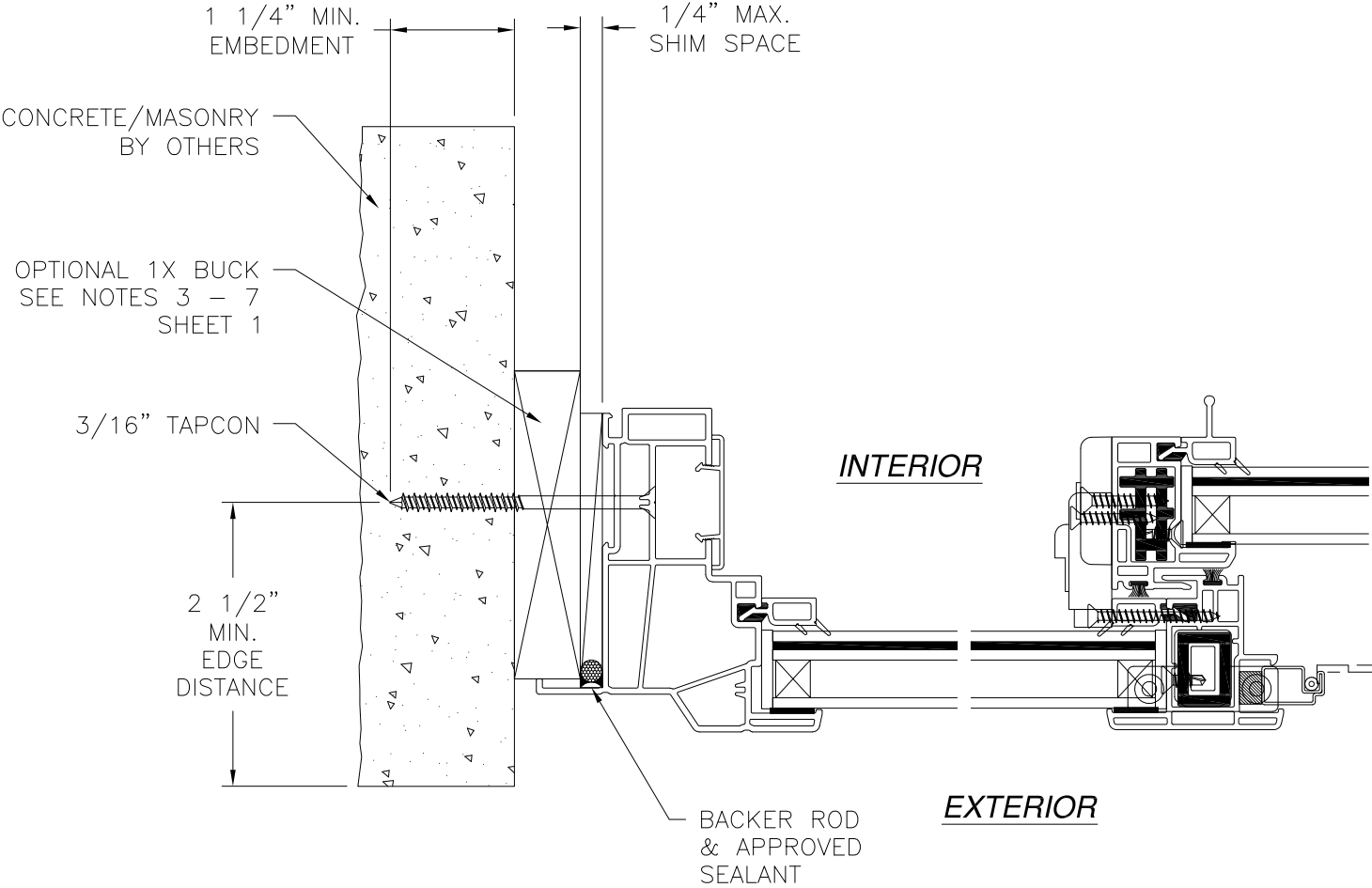


Luis R. Lomas P.E.
FL No.: 62514

REVISIONS			
REV	DESCRIPTION	DATE	APPROVED
F	REVISED ANCHORS	02/05/18	R.L.



VERTICAL CROSS SECTION
CONCRETE/MASONRY INSTALLATION



JAMB INSTALLATION DETAIL
CONCRETE/MASONRY INSTALLATION

- NOTES:**
1. INTERIOR AND EXTERIOR FINISHES, BY OTHERS, NOT SHOWN FOR CLARITY.
 2. PERIMETER AND JOINT SEALANT BY OTHERS TO BE DESIGNED IN ACCORDANCE WITH ASTM E2112

SIGNED: 02/05/2018

VIWIN TECH WINDOWS AND DOORS

2400 IRVIN COBB DRIVE
PADUCAH, KY 42003

SHORELINE 3100 SINGLE GLIDER

74" X 63"

FLANGE INSTALLATION DETAILS

DRAWN: R.L.	DWG NO. 08-00207	REV F
SCALE NTS	DATE 11/15/06	SHEET 9 OF 13

L. ROBERTO LOMAS P.E.

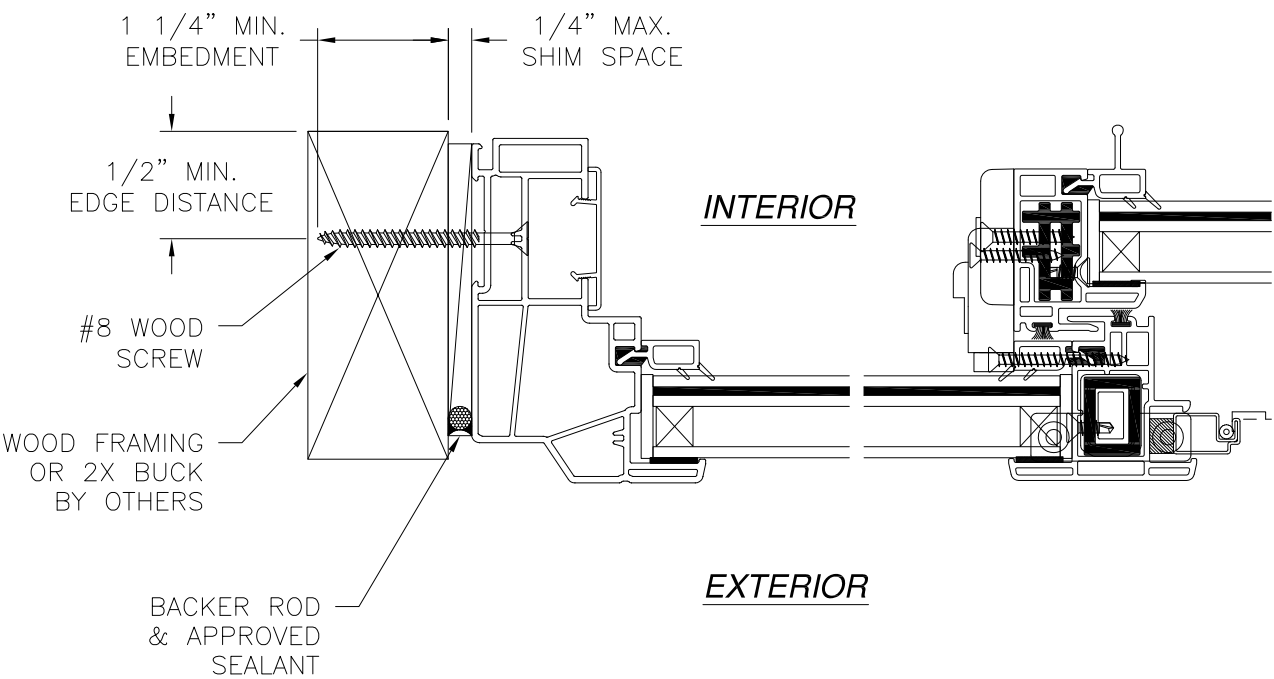
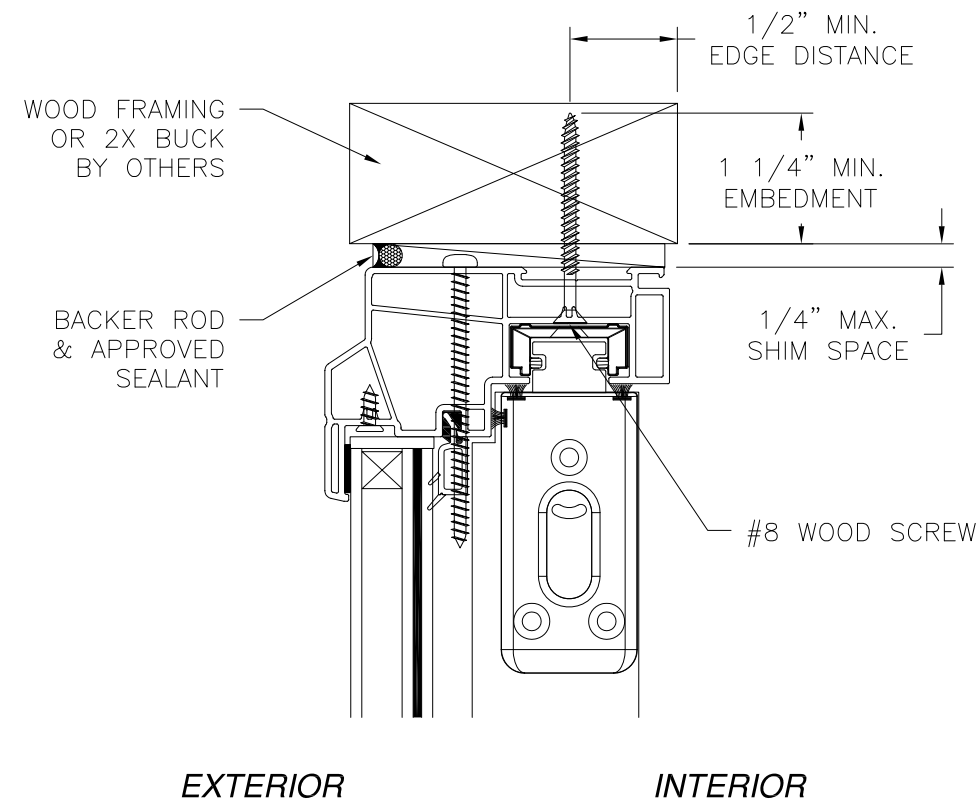
1432 WOODFORD RD LEWISVILLE, NC 27023

434-688-0609 rllomas@lrlomaspe.com

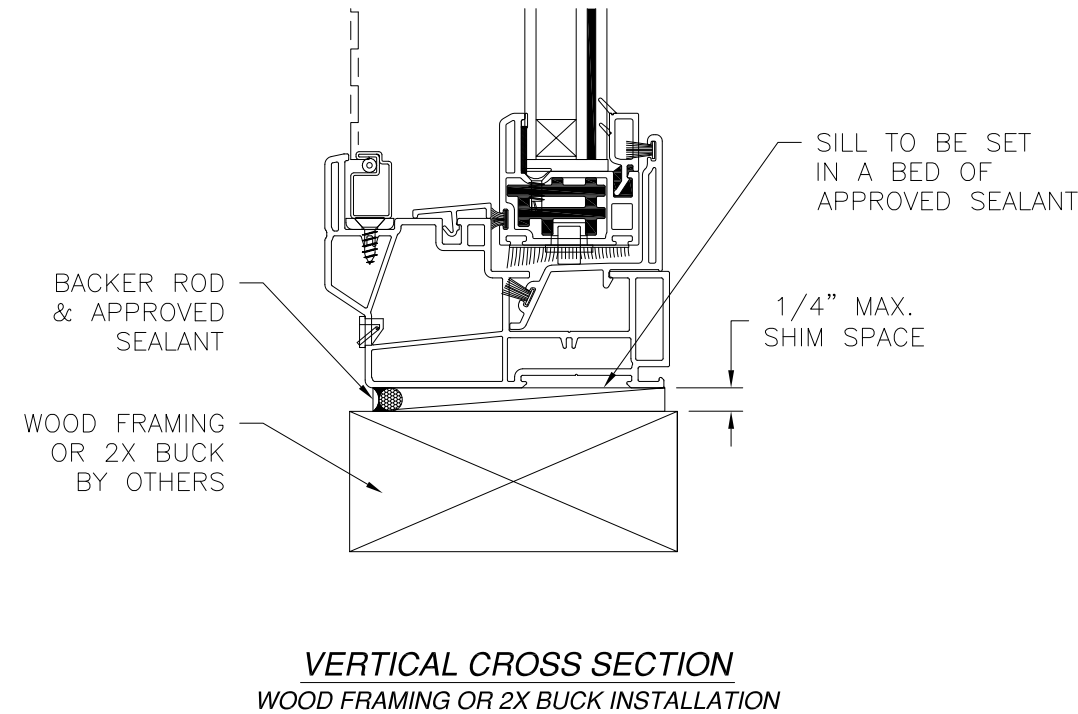


Luis R. Lomas P.E.
FL No.: 62514

REVISIONS			
REV	DESCRIPTION	DATE	APPROVED
F	REVISED ANCHORS	02/05/18	R.L.



JAMB INSTALLATION DETAIL
WOOD FRAMING OR 2X BUCK INSTALLATION



- NOTES:**
1. INTERIOR AND EXTERIOR FINISHES, BY OTHERS, NOT SHOWN FOR CLARITY.
 2. PERIMETER AND JOINT SEALANT BY OTHERS TO BE DESIGNED IN ACCORDANCE WITH ASTM E2112

SIGNED: 02/05/2018

VIWIN TECH WINDOWS AND DOORS

2400 IRVIN COBB DRIVE
PADUCAH, KY 42003

SHORELINE 3100 SINGLE GLIDER

74" X 63"

FLUSH INSTALLATION DETAILS

DRAWN: R.L.

DWG NO. 08-00207

REV F

SCALE NTS

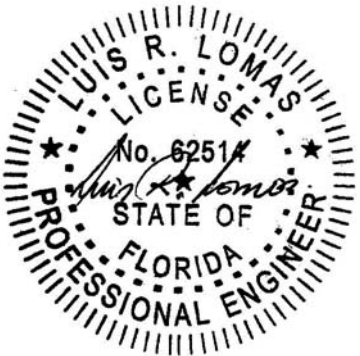
DATE 11/15/06

SHEET 10 OF 13

L. ROBERTO LOMAS P.E.

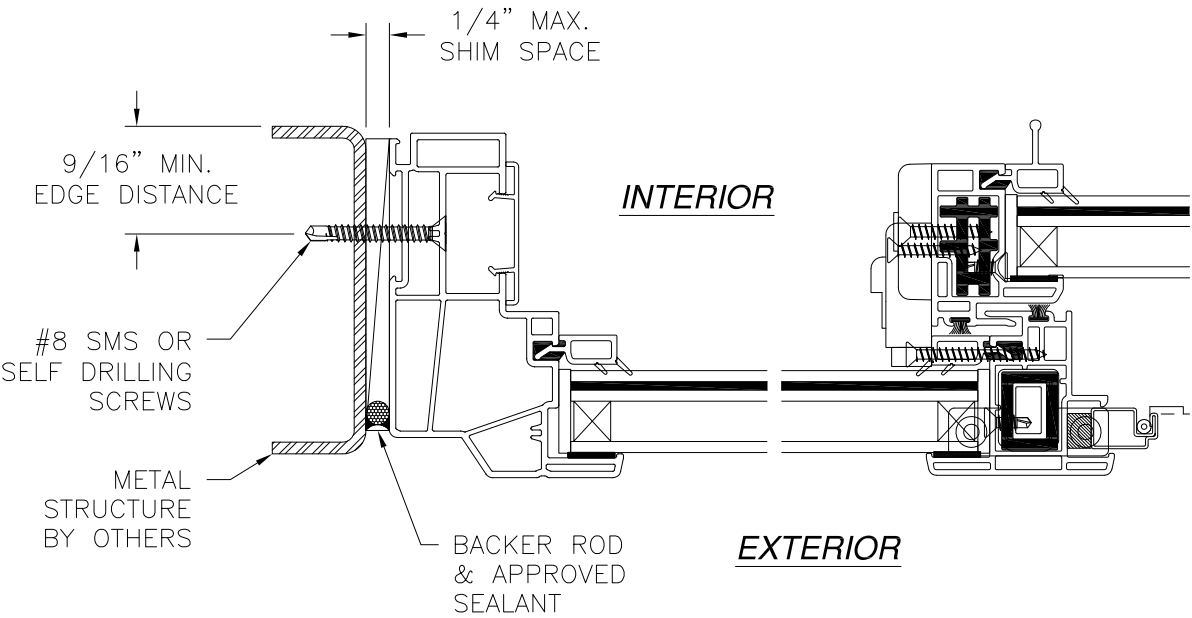
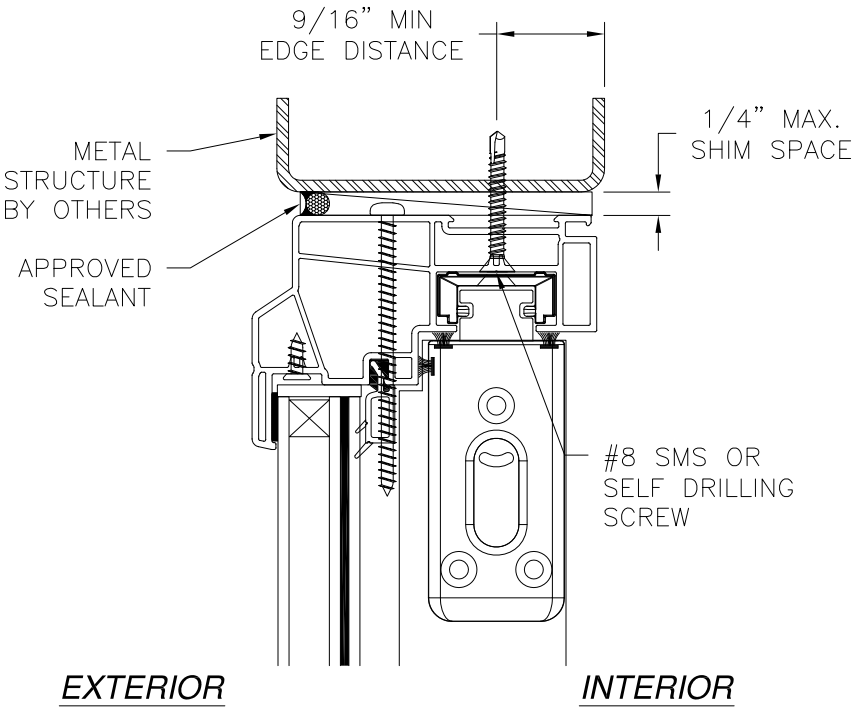
1432 WOODFORD RD LEWISVILLE, NC 27023

434-688-0609 rllomas@lrlomaspe.com

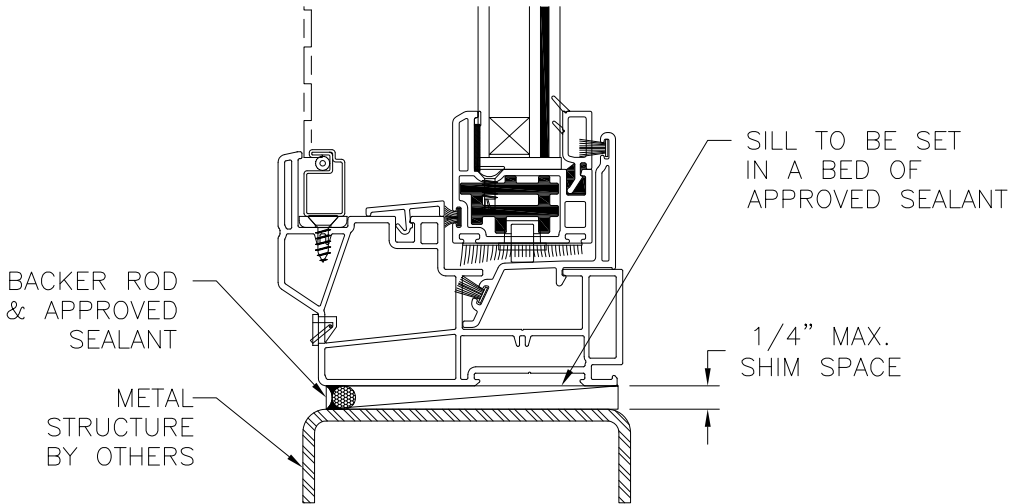


Luis R. Lomas P.E.
FL No.: 62514

REVISIONS			
REV	DESCRIPTION	DATE	APPROVED
F	REVISED ANCHORS	02/05/18	R.L.



JAMB INSTALLATION DETAIL
METAL STRUCTURE INSTALLATION



VERTICAL CROSS SECTION
METAL STRUCTURE INSTALLATION

- NOTES:
1. INTERIOR AND EXTERIOR FINISHES, BY OTHERS, NOT SHOWN FOR CLARITY.
 2. PERIMETER AND JOINT SEALANT BY OTHERS TO BE DESIGNED IN ACCORDANCE WITH ASTM E2112

SIGNED: 02/05/2018

VIWIN TECH WINDOWS AND DOORS

2400 IRVIN COBB DRIVE
PADUCAH, KY 42003

SHORELINE 3100 SINGLE GLIDER

74" X 63"

FLUSH INSTALLATION DETAILS

DRAWN: R.L.

DWG NO. 08-00207

REV F

SCALE NTS

DATE 11/15/06

SHEET 11 OF 13

L. ROBERTO LOMAS P.E.

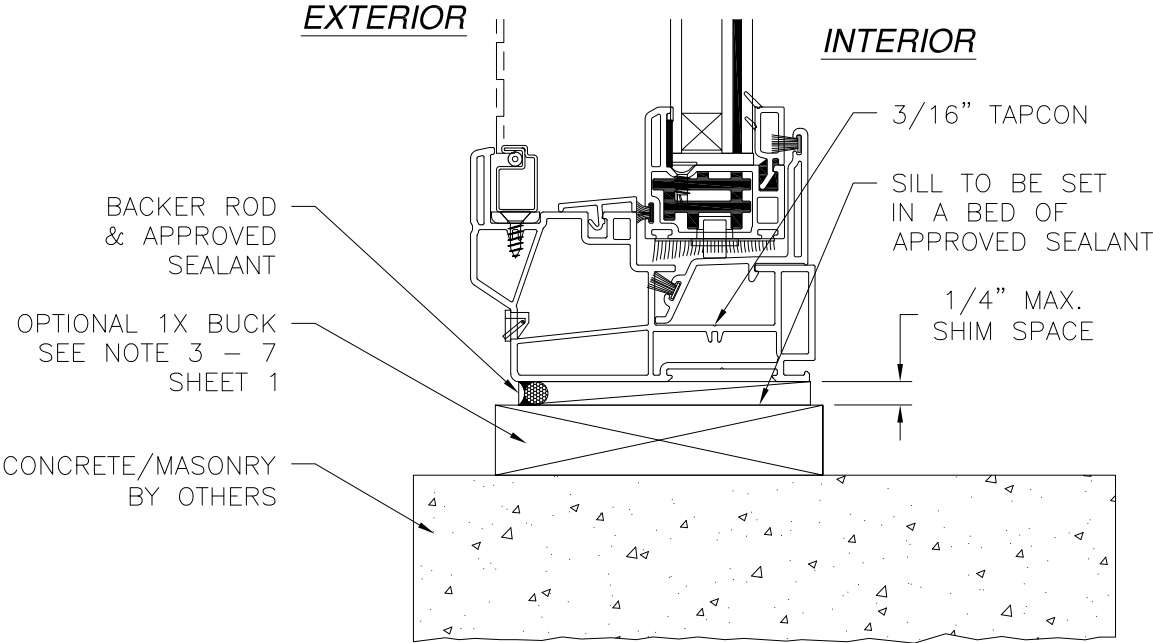
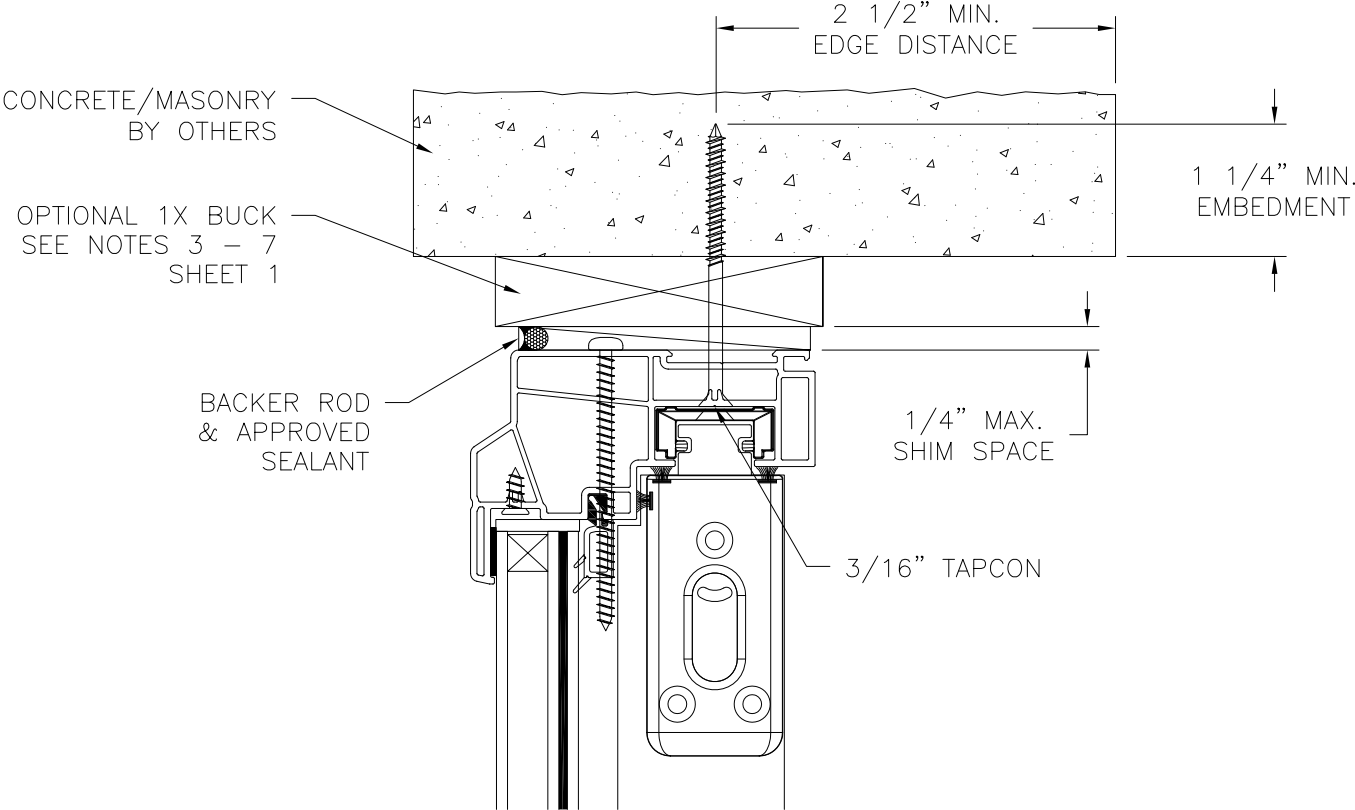
1432 WOODFORD RD LEWISVILLE, NC 27023

434-688-0609 rllomas@rlomaspe.com

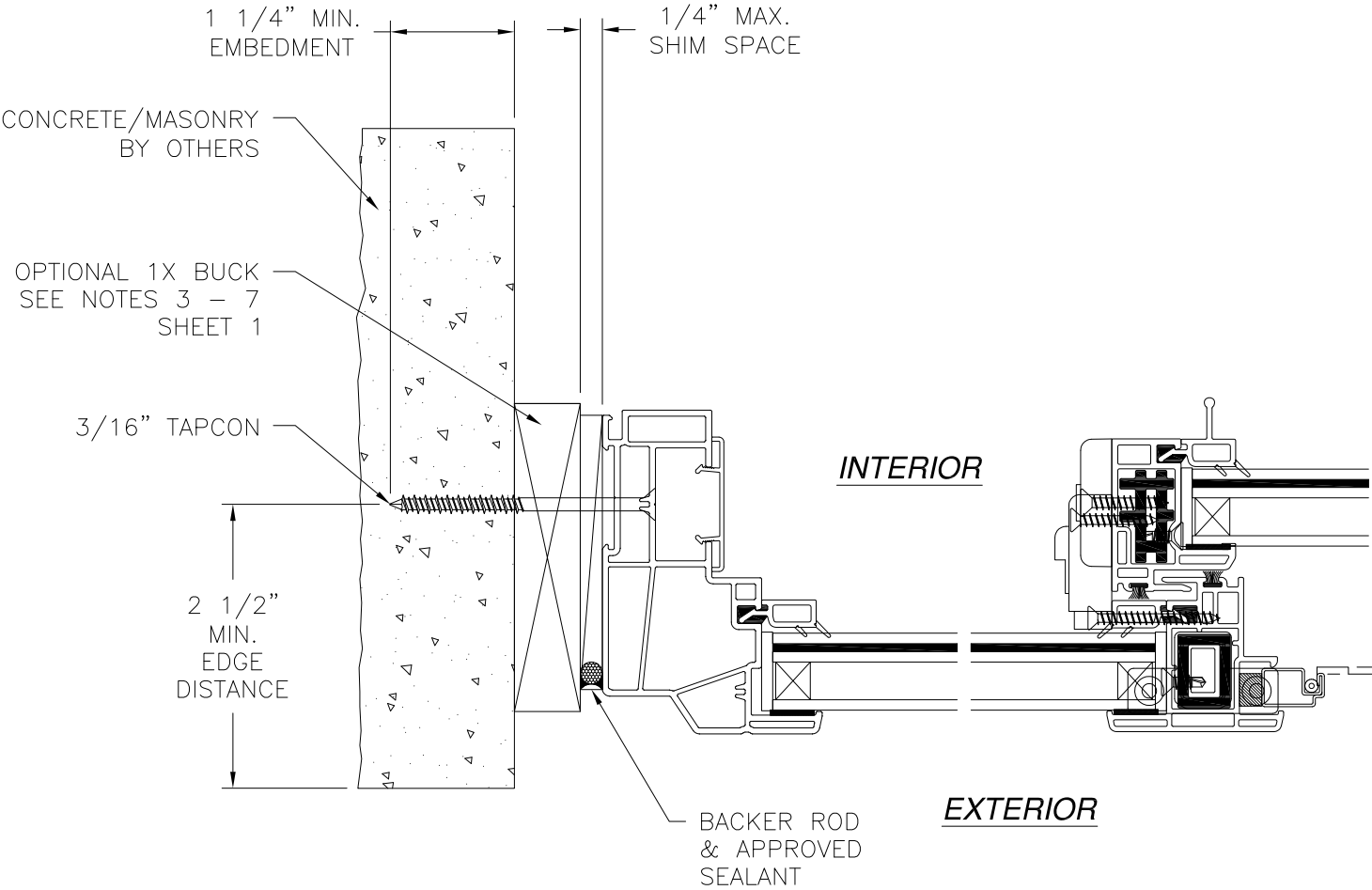


Luis R. Lomas P.E.
FL No.: 62514

REVISIONS			
REV	DESCRIPTION	DATE	APPROVED
F	REVISED ANCHORS	02/05/18	R.L.



VERTICAL CROSS SECTION
CONCRETE/MASONRY INSTALLATION



JAMB INSTALLATION DETAIL
CONCRETE/MASONRY INSTALLATION

- NOTES:
1. INTERIOR AND EXTERIOR FINISHES, BY OTHERS, NOT SHOWN FOR CLARITY.
 2. PERIMETER AND JOINT SEALANT BY OTHERS TO BE DESIGNED IN ACCORDANCE WITH ASTM E2112

SIGNED: 02/05/2018

VIWIN TECH WINDOWS AND DOORS

2400 IRVIN COBB DRIVE
PADUCAH, KY 42003

SHORELINE 3100 SINGLE GLIDER

74" X 63"

FLUSH INSTALLATION DETAILS

DRAWN: R.L.

DWG NO. 08-00207

REV F

SCALE NTS

DATE 11/15/06

SHEET 12 OF 13

L. ROBERTO LOMAS P.E.

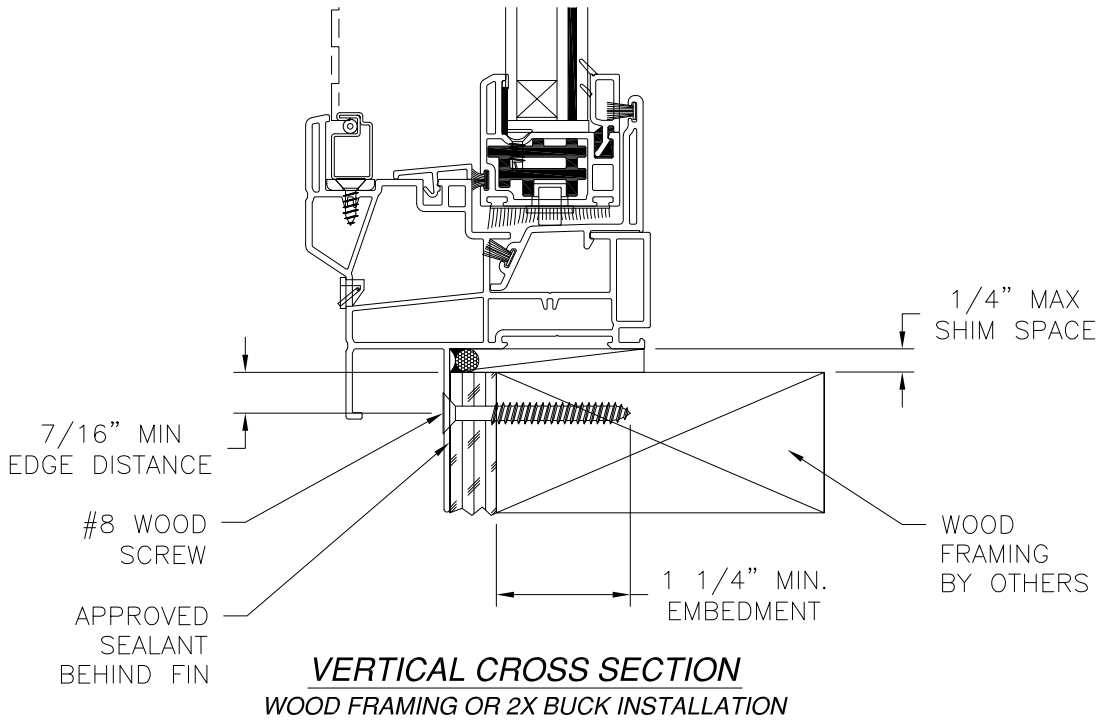
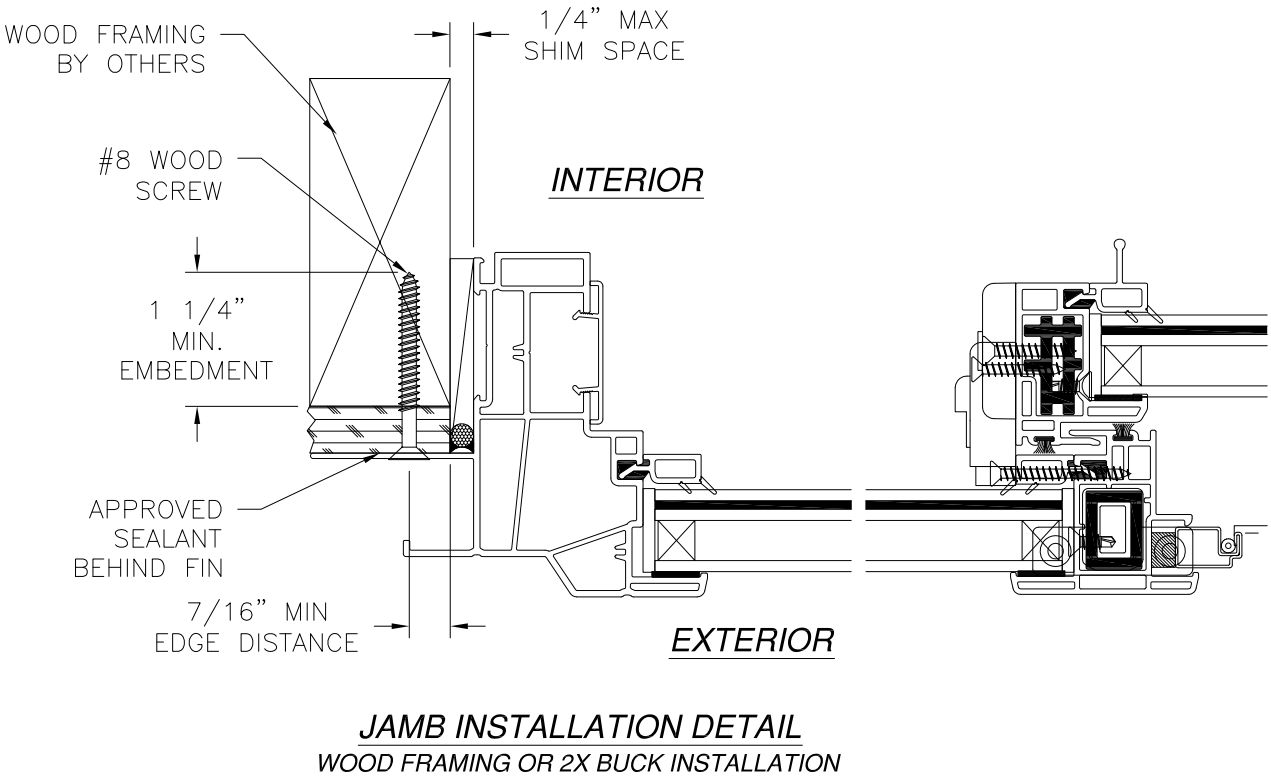
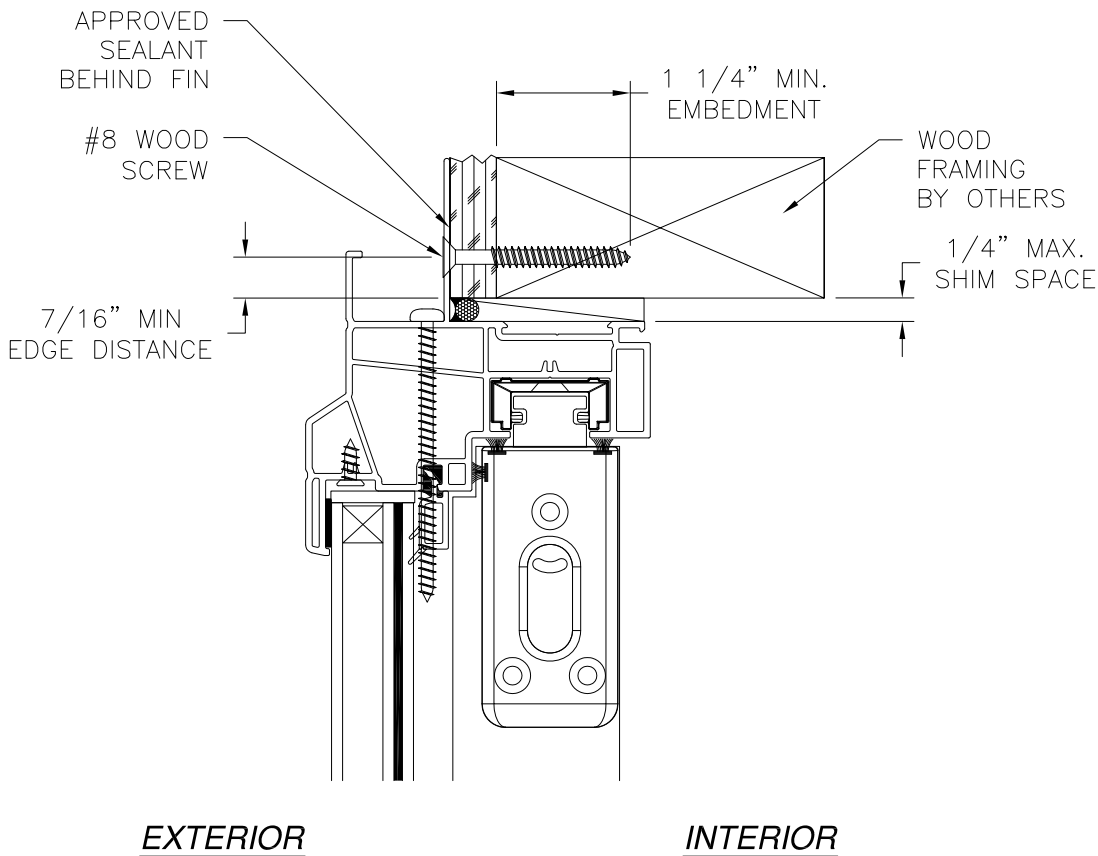
1432 WOODFORD RD LEWISVILLE, NC 27023

434-688-0609 rllomas@lrlomaspe.com



Luis R. Lomas P.E.
FL No.: 62514

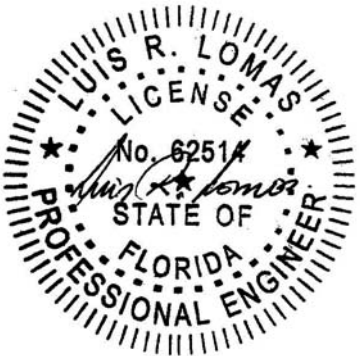
REVISIONS			
REV	DESCRIPTION	DATE	APPROVED
F	REVISED ANCHORS	02/05/18	R.L.



- NOTES:
1. INTERIOR AND EXTERIOR FINISHES, BY OTHERS, NOT SHOWN FOR CLARITY.
 2. PERIMETER AND JOINT SEALANT BY OTHERS TO BE DESIGNED IN ACCORDANCE WITH ASTM E2112

SIGNED: 02/05/2018

VIWIN TECH WINDOWS AND DOORS 2400 IRVIN COBB DRIVE PADUCAH, KY 42003		
SHORELINE 3100 SINGLE GLIDER 74" X 63" FIN INSTALLATION DETAILS		
DRAWN: R.L.	DWG NO. 08-00207	REV F
SCALE NTS	DATE 11/15/06	SHEET 13 OF 13
L. ROBERTO LOMAS P.E. 1432 WOODFORD RD LEWISVILLE, NC 27023 434-688-0609 rllomas@lrlomaspe.com		



Luis R. Lomas P.E.
FL No.: 62514